

DISPLACEMENT CODE	G	MAX	DISPLACEMENT CODE	G	MAX
022	132.7	[5.22]	141	158.1	[6.22]
025	133.5	[5.26]	179	166.7	[6.56]
028	132.7	[5.22]	226	177.1	[6.97]
035	136.5	[5.37]	451	228.0	[8.98]
045	136.5	[5.37]			
059	139.5	[5.49]			
073	142.8	[5.62]			
089	146.4	[5.76]			
097	148.2	[5.84]			
113	151.7	[5.97]			

REV	DESCRIPTION	BY	CHK	DATE	ECN
A	ENGINEERING RELEASE	SMM		09-13-02	M28891
B	-1>(4C)WAS 131.4/[5.17] MAX -2>(4B)WAS 96.8/[3.81] MAX	SJP		04-07-04	46856
C	-1>REVISED DIMENSIONS AS PER STACK UP -2>REVISED TABULATION BLOCK -3>REVISED GD AND T	CSG		12-28-10	M80923
D	-1>REVISED PICTORIALLY -2>(4D)UPDATED TABULATION FOR G MAX	AAB		02-17-14	0054755
E	(1C)ADDED DANFOSS LOGO TO END CAP	AAB		01-22-15	0061684
F	(4A)NOTE 3 WAS CASE DRAIN: 0 = NO ...	YUP		01-22-15	0065202
G	(1C)REMOVED DANFOSS LOGO	SSD		04-23-21	0131343

D

D

C

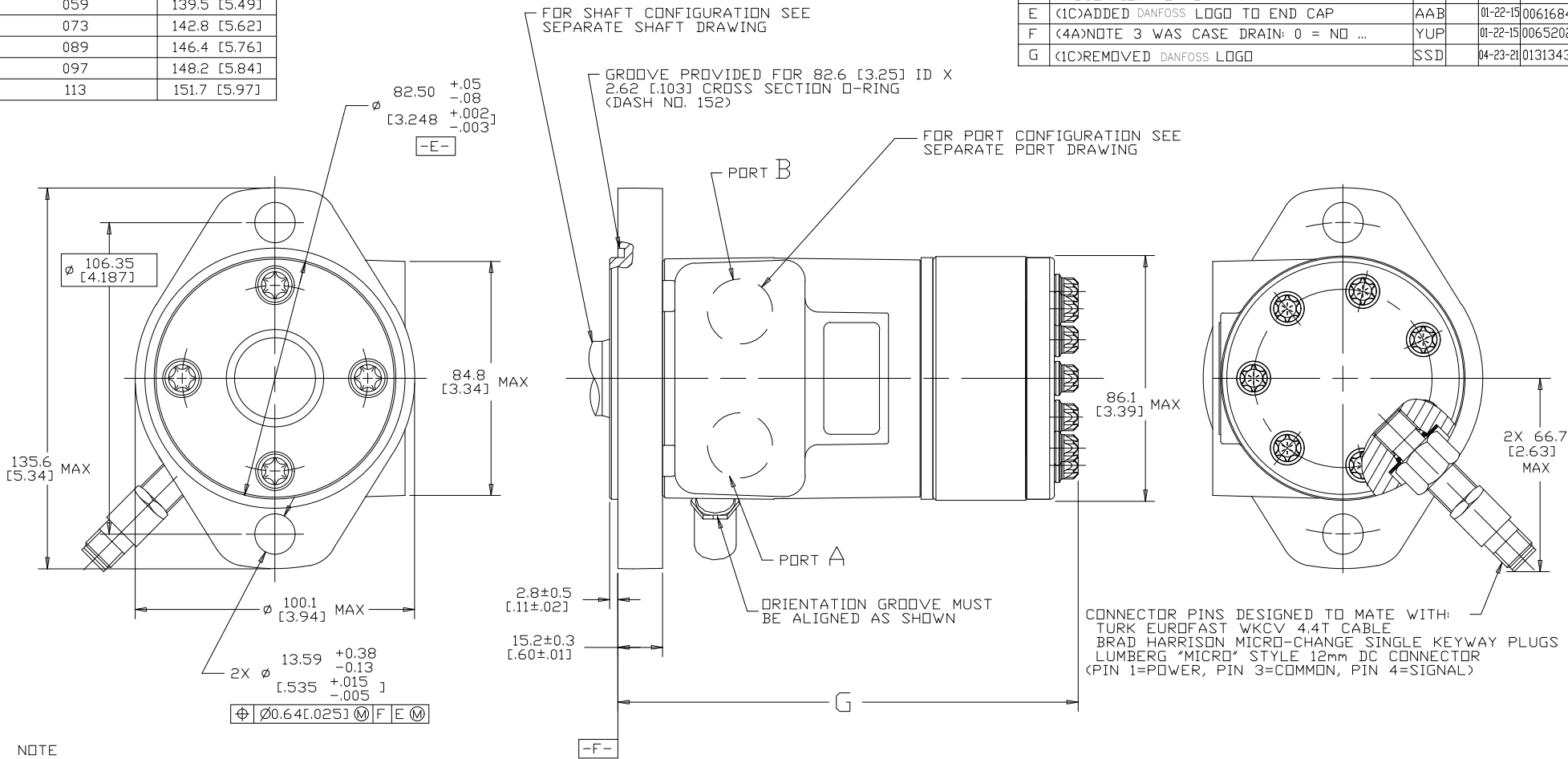
C

B

B

A

A



NOTE

- 1 ROTATION:
STANDARD: WHEN FACING SHAFT END OF MOTOR, SHAFT TO ROTATE CLOCKWISE WHEN PORT "A" IS PRESSURIZED
COUNTERCLOCKWISE WHEN PORT "B" IS PRESSURIZED

REVERSE: WHEN FACING SHAFT END OF MOTOR, SHAFT TO ROTATE CLOCKWISE WHEN PORT "B" IS PRESSURIZED
COUNTERCLOCKWISE WHEN PORT "A" IS PRESSURIZED
- 2 MOUNTING FLANGE: AA = 2 BOLT STD: Ø 82.6 [3.25] X 3.0 [1.12] PILOT Ø 13.59 [5.35] MOUNTING HOLES ON 106.2 [4.18] DIA. BOLT CIRCLE
- 3 CASE DRAIN: 00 = NO CASE DRAIN
- 4 SENSOR OUTPUT WILL BE 60 ELECTRICAL PULSES PER SHAFT REVOLUTION.
SUPPLY VOLTAGE: 8 TO 28 Vdc
OUTPUT VOLTAGE: LOW .5 Vdc AT 10 mA; HIGH Vs-1 Vdc



REVIEWED FOR CLASSIFICATION PER ESP-042

UNLESS OTHERWISE SPECIFIED ALL DIMENSIONS ARE IN INCHES <input type="checkbox"/> MILLIMETERS <input checked="" type="checkbox"/>		DRAWING BASED ON ANSI Y14.5M-1982	
TOLERANCES X ± ---- XX ± REF XXX ± ONLY < ± ----		THE REPRODUCTION, DISTRIBUTION, AND UTILIZATION OF THIS DOCUMENT, AS WELL AS THE COMMUNICATION OF ITS CONTENTS TO OTHERS WITHOUT EXPLICIT AUTHORIZATION IS PROHIBITED. OFFENDERS WILL BE HELD LIABLE FOR THE PAYMENT OF DAMAGES. ALL RIGHTS RESERVED IN THE EVENT OF THE GRANT OF A PATENT, UTILITY MODEL, OR DESIGN. (PER ISO 16016)	
UNSPECIFIED RADI ARE -----		DRAWN BY/DATE SMM 09-20-02	MATERIAL/HEAT TREAT
UNSPECIFIED DRAFT ANGLES ARE -----		CHECKED BY/DATE MLL 09-27-02	
THIRD ANGLE PROJECTION		ENGRG BY/DATE JDM 09-30-02	TITLE H MOTOR INSTALLATION
DRAWING FORMAT CADD <input checked="" type="checkbox"/> MANUAL <input type="checkbox"/>		DO NOT SCALE	MICROINCHES <input type="checkbox"/> MICROMETERS <input type="checkbox"/> MICROINCHES <input type="checkbox"/> NUMBER A-37-477
		ARITHMETICAL AVERAGE	SCALE 1/1 SHEET 1 OF 1