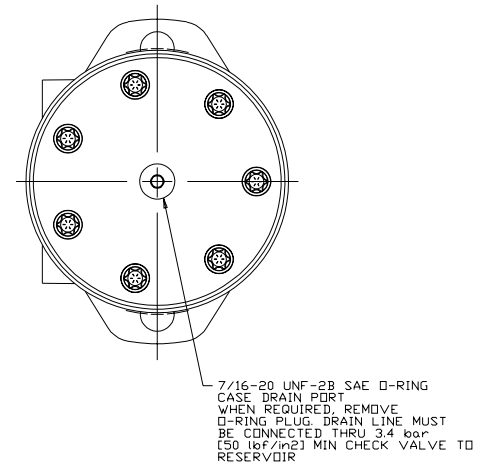
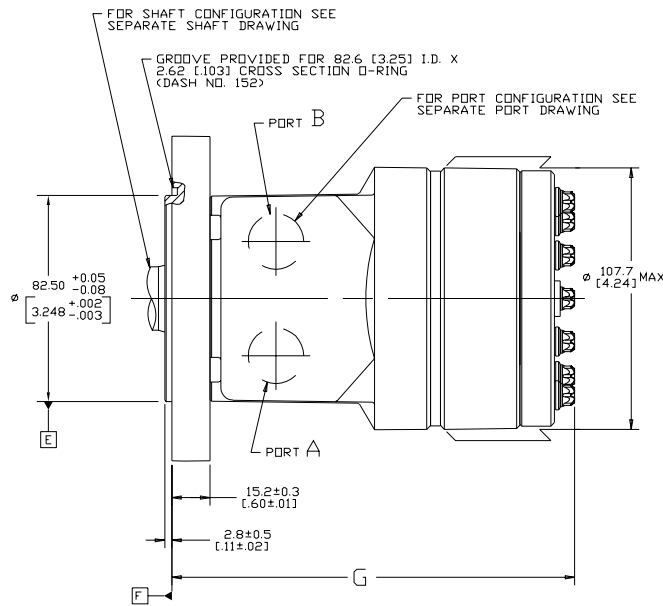
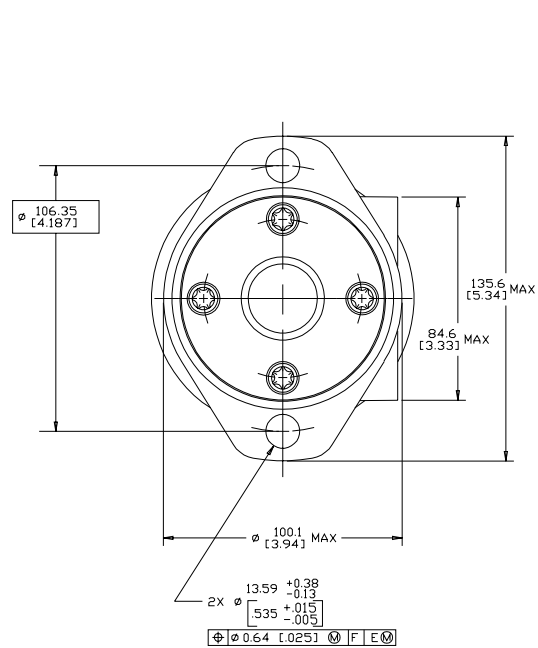


DISP. CODE	G	MAX
036	138.5	[5.45]
046	140.8	[5.54]
057	143.0	[5.63]
073	146.5	[5.77]
088	149.6	[5.89]
101	152.3	[6.00]
114	155.0	[6.10]
137	159.8	[6.29]
182	169.5	[6.67]
227	178.8	[7.04]

REV	DESCRIPTION	BY	CHK	DATE	ECN
A	ENGINEERING RELEASE	SMM		06-09-04	48257
B	-1X6C) WAS 131.4X[5.17] MAX -2X(7B) WAS Ø 96.8X[3.81] MAX	SRM		04-07-04	ECR8166
C	REVISED FOR ASSEMBLY STACKUP	AAB		07-21-11	M82810
D	(BA) NOTE 3 WAS CASE DRAIN - 1...	TTV	CSG	04-08-16	0070053



- NOTE
- ROTATION:
 - STANDARD: WHEN FACING SHAFT END OF MOTOR, SHAFT TO ROTATE CLOCKWISE WHEN PORT "A" IS PRESSURIZED COUNTERCLOCKWISE WHEN PORT "B" IS PRESSURIZED
 - REVERSE: WHEN FACING SHAFT END OF MOTOR, SHAFT TO ROTATE COUNTERCLOCKWISE WHEN PORT "B" IS PRESSURIZED ROTATE CLOCKWISE WHEN PORT "A" IS PRESSURIZED
 - MOUNTING FLANGE:
 - AA, AD = 2 BOLT STD. Ø82.6 [3.25] X 3.0 [1.2] PILDØ13.59 [5.35] MOUNTING HOLES DN Ø106.2 [4.18] B.C.
 - CASE DRAIN:
 - 01 = 7/16-20 UNF-2B SAE O-RING PORT (END CAP)

REVIEWED FOR CLASSIFICATION PER ESP-042

UNLESS OTHERWISE SPECIFIED DIMENSIONS ARE IN INCHES <input type="checkbox"/> MILLIMETERS <input checked="" type="checkbox"/>	DRAWING BASED ON ASME Y14.5M-1994		
TOLERANCES	THE REPRODUCTION, DISTRIBUTION AND UTILIZATION OF THIS DOCUMENT AS WELL AS THE COMMUNICATION OF ITS CONTENTS TO OTHERS WITHOUT EXPRESS AUTHORIZATION IS PROHIBITED. OFFENDERS WILL BE HELD LIABLE FOR THE PAYMENT OF DAMAGES. ALL RIGHTS RESERVED IN THE EVENT OF A PATENT, UTILITY MODEL, OR DESIGN. (PER ISO 10000)		
X - - - -	DRW. BY: SMM 07-02-04	MATERIAL/HEAT TREAT	
XX - - - -	CHKD BY: AGJ 07-06-04		
✓ - - - -	ENGR. BY: JML 07-06-04	TITLE	
UNSPECIFIED RADI ARE	METALLURGY: - - - -	S MOTOR INSTALLATION	
UNSPECIFIED DRAFT ANGLES ARE	THIRD ANGLE PROJECTION	NUMERICAL AVERAGES	NUMBER
D SIZE	DO NOT SCALE	SCALE 1/1	SHEET 1 OF 1

A-1470-101