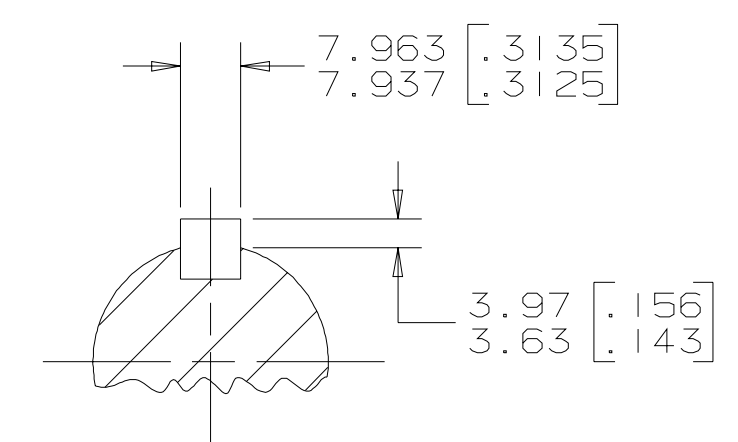
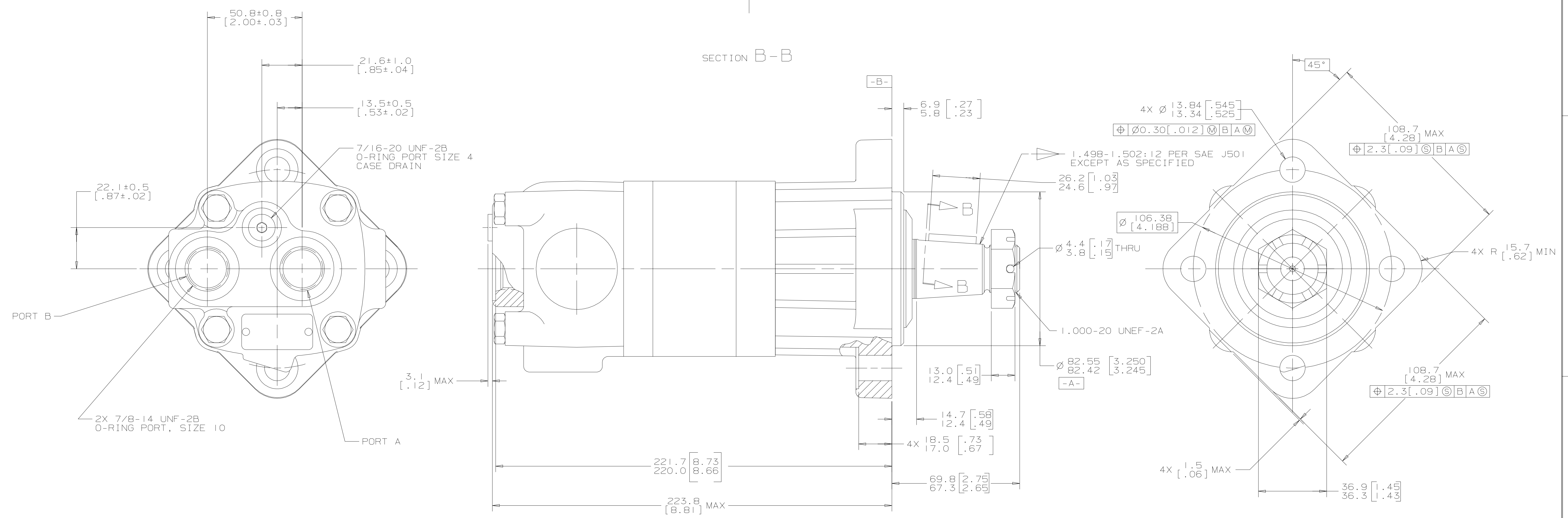


REV	DESCRIPTION	BY	CHK	DATE	ECN
A	ENGINEERING RELEASE	RAF		1-1-97	M16665
B	(4A) REVISED NOTES	AGJ		5-13-02	41044
C	(2D) 4X Ø 13.84/13.34 [.545/.525] WAS 4X Ø 13.72/13.46 [.540/.530]	AGJ		9-30-03	45504
D	(5A) NOTE 2 WAS "DISPLACEMENT: 19. ...."	RG		6-26-06	56090



SECTION B-B



NOTE

- ROTATION:  
STANDARD: WHEN FACING SHAFT END OF MOTOR, SHAFT TO ROTATE; CLOCKWISE WHEN PORT "A" IS PRESSURIZED; COUNTERCLOCKWISE WHEN PORT "B" IS PRESSURIZED
- DISPLACEMENT: 187  
306.6 cm<sup>3</sup>/r [18.71 in<sup>3</sup>/r]
- MOUNTING TYPE: AW  
STANDARD: 4 BOLT: Ø 82.6 [3.25] PILOT  
Ø 13.59 [.535] HOLES ON Ø 106.4 [4.19] BOLT CIRCLE. CAST BUMPS REMOVED
- OUTPUT SHAFT: 03  
Ø 31.75 [1.250] .125:1 TAPERED SHAFT PER SAE J501 WITH  
1.000-20 UNEF-2A THREADED SHAFT END AND SLOTTED HEX NUT,  
7.938 [.3125] SQ X 25.40 [1.000] STRAIGHT KEY
- PORT TYPE: AD  
7/8-14 UNF-2B SAE O-RING PORTS, SIZE -10 - END PORTS
- CASE FLOW OPTION: 01  
7/16-20 UNF-2B SAE O-RING PORT, SIZE -4

G S K

UNLESS OTHERWISE SPECIFIED ALL DIMENSIONS ARE IN		DRAWING BASED ON ANSI Y14.5M-1982	
INCHES <input type="checkbox"/>	MILLIMETERS <input checked="" type="checkbox"/>	THE REPRODUCTION, DISTRIBUTION, AND UTILIZATION OF THIS DOCUMENT, AS WELL AS THE COMMUNICATION OF ITS CONTENTS TO OTHERS WITHOUT EXPLICIT AUTHORIZATION IS PROHIBITED. OFFENDERS WILL BE HELD LIABLE FOR THE PAYMENT OF DAMAGES. ALL RIGHTS RESERVED IN THE EVENT OF THE GRANT OF A PATENT, UTILITY MODEL OR DESIGN (PER ISO 16016)	
TOLERANCES			
.X	----		
.XX	----	DRWN BY/DATE: RAF 1-7-97	MATERIAL/HEAT TREAT
.XXX	----	CHECKED BY/DATE: WRD 1-10-97	
UNSPECIFIED RADII ARE	----	ENGR BY/DATE: M.L.B 1-10-97	TITLE
UNSPECIFIED DRAFT ANGLES ARE	----	METALLURGY BY/DATE: ----	2000 SERIES MOTOR INSTALL
DRAWING FORMAT CAD <input checked="" type="checkbox"/> MANUAL <input type="checkbox"/>	THIRD ANGLE PROJECTION	MICROINCHES (MICROINCHES) <input type="checkbox"/>	NUMBER
DO NOT SCALE	ARTHEMATICAL AVERAGE	250	104-1854-006
		SCALE 1/1	SHEET 1 OF 1