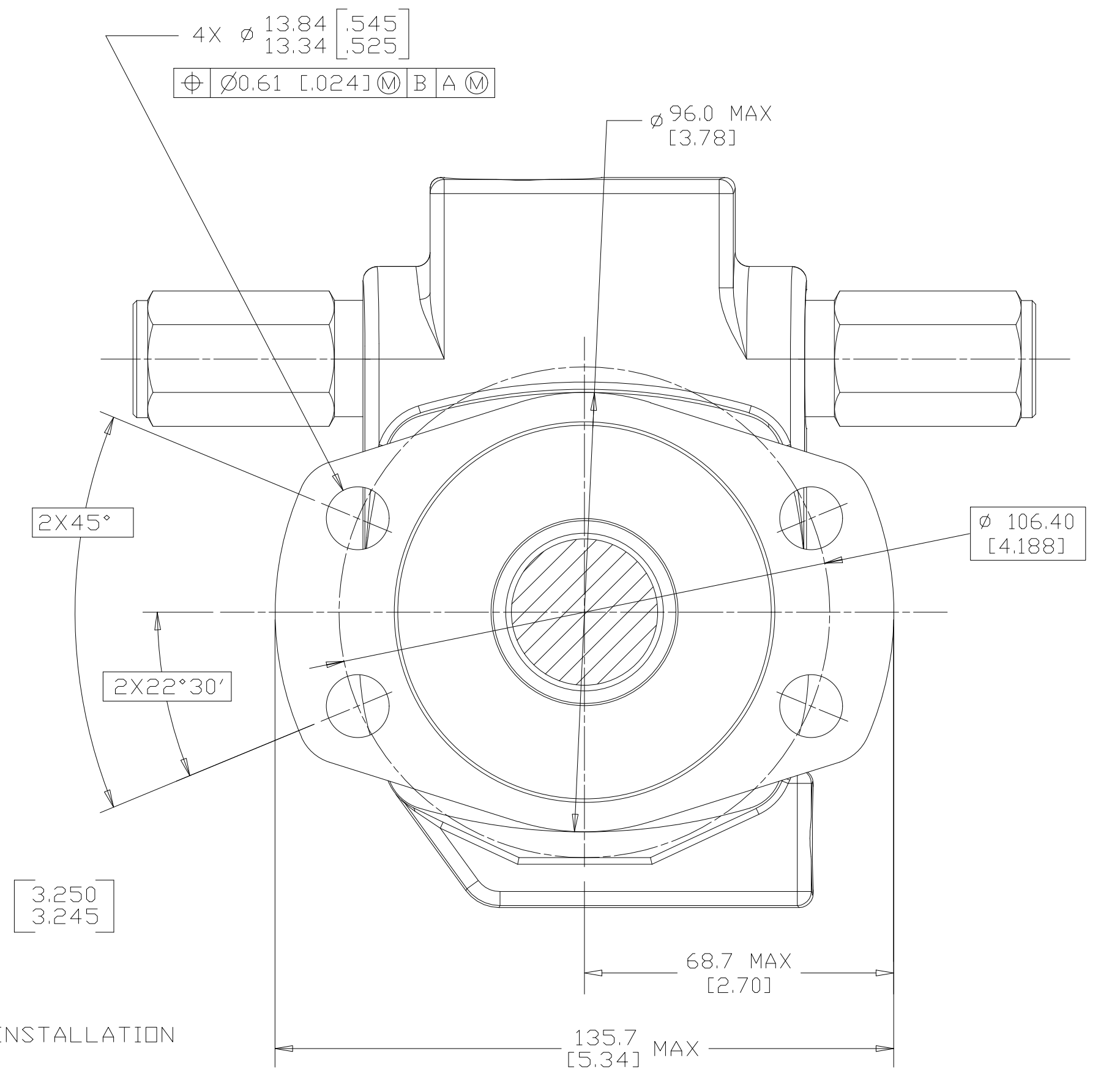
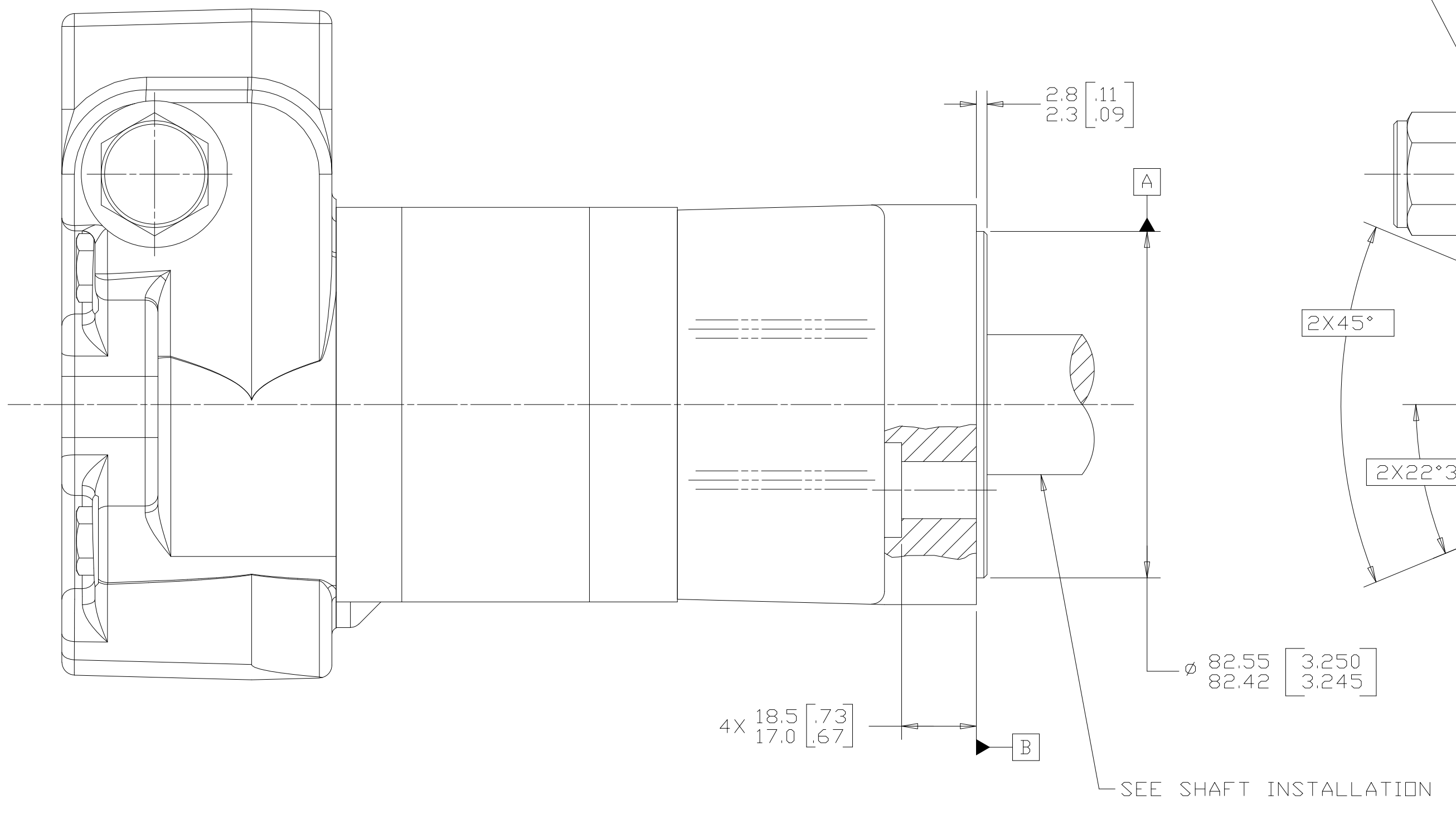
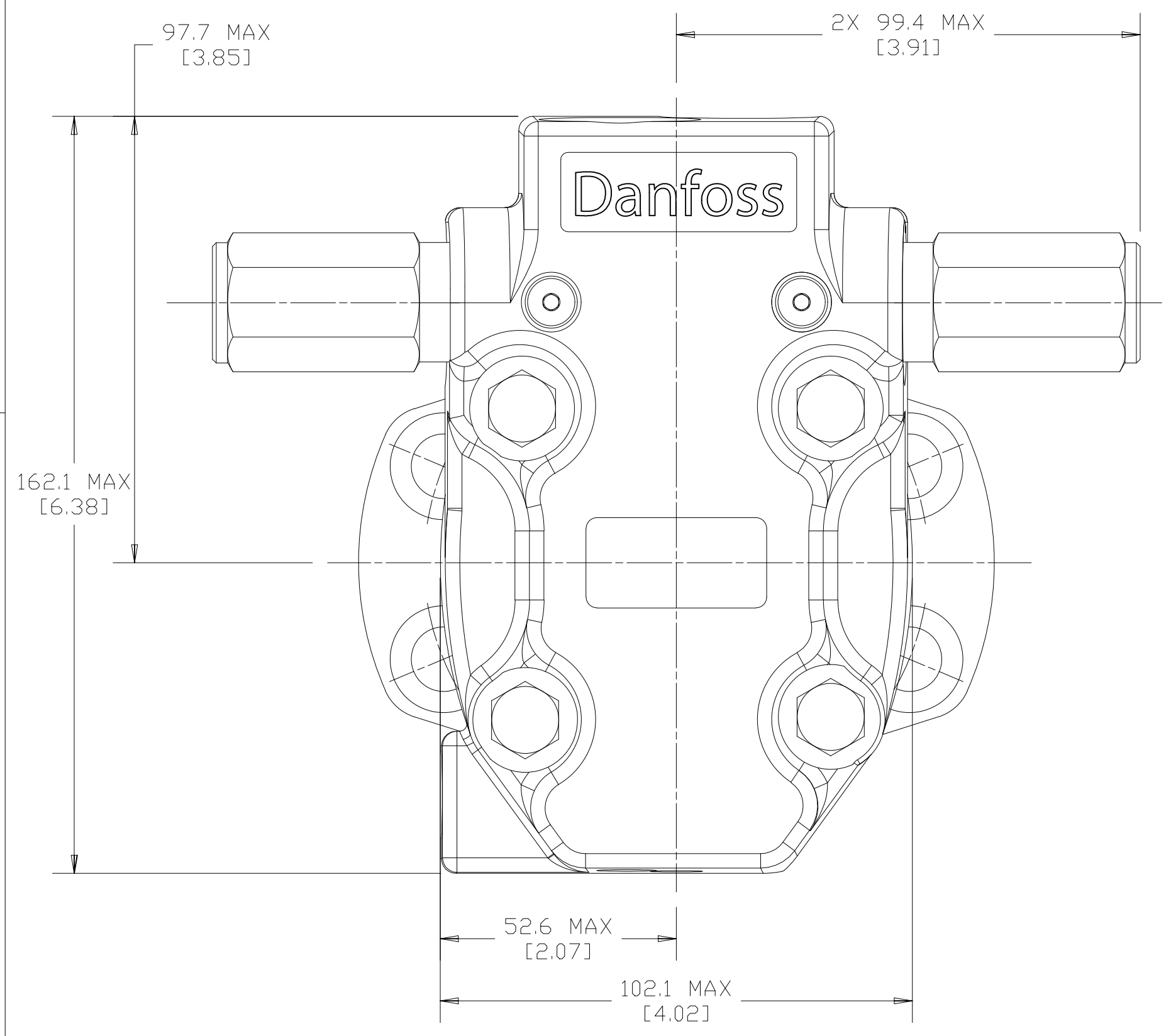
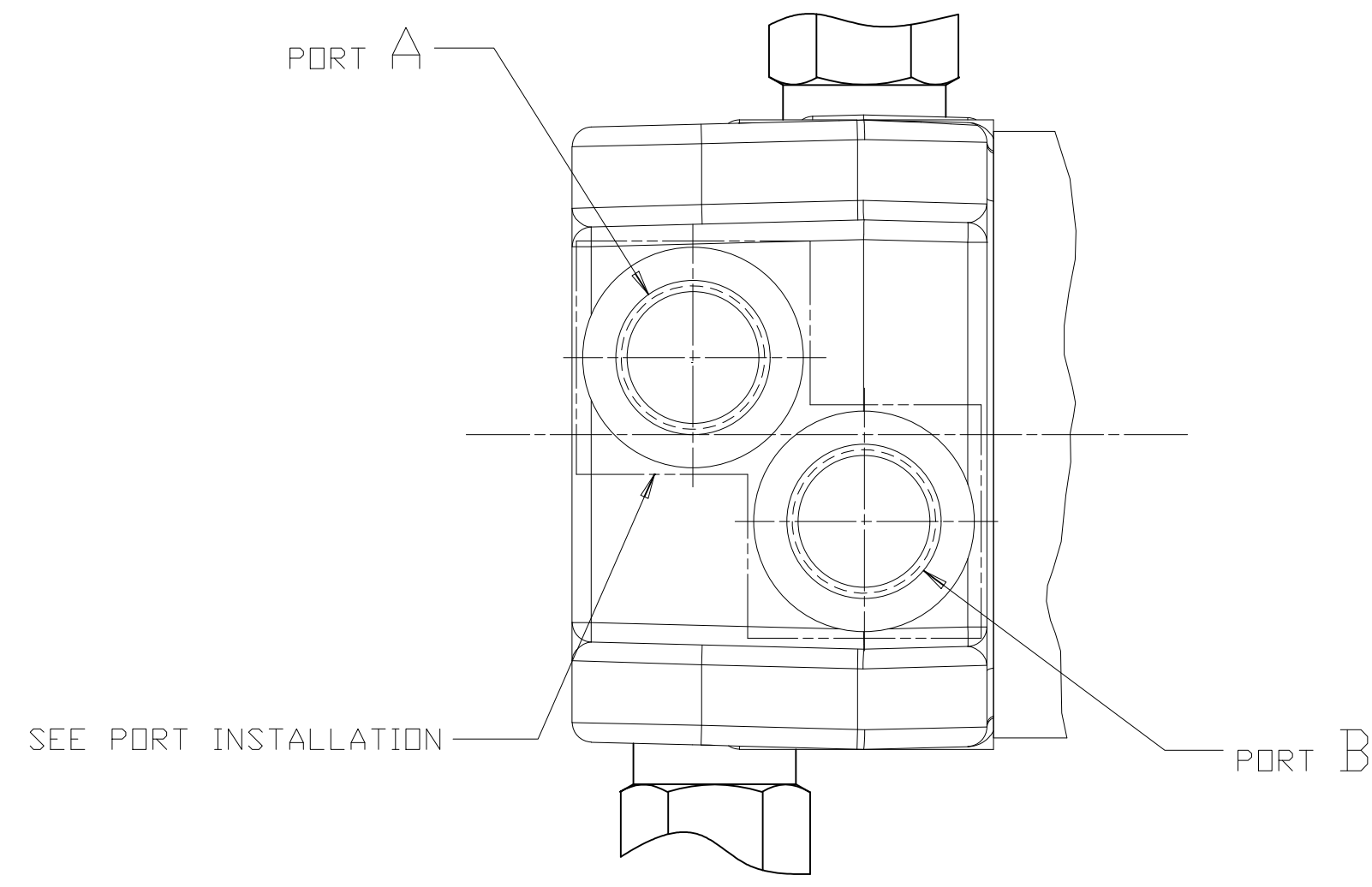


| REV | DESCRIPTION | BY | CHK | DATE | ECN |
|-----|--|-----|-----|----------|---------|
| A | RELEASE FOR SAMPLES AND ESTIMATE | MLL | | 3-5-02 | M26174A |
| B | <4A>NOTE 2 WAS MOUNTING TYPE: J | AGJ | | 6-2-03 | X44429 |
| C | ENGINEERING RELEASE | AGJ | | 11-14-03 | M60377 |
| D | <8B>96.5[3.80] MAX -WAS- 95.0[3.74] MAX | MGF | | 4-2-04 | 47302 |
| E | -1>(8C)>97.7 [3.85] MAX WAS 96.5 [3.80] MAX -2>(7C)>2X99.4 [3.91] MAX WAS 2X 98.5 [3.88] MAX -3>(8B) ADDED 162.1 [6.38] MAX -4>(6B) REMOVED 66.3 [2.61] MAX -5>(7B) REMOVED 50.3 [1.98] MAX AND 49.5 [1.95] MAX -6>(7B) ADDED 102.1 [4.02] MAX -7>(7B)ADDED 52.6 [2.07] MAX -8>(2C) REMOVED 98.30 [3.870] AND 49.15 [1.935] -9>(1B) REMOVED 20.34 [0.801] AND 40.69 [1.602] -10>(1B) ADDED 106.40 [4.188] -11>(3C) ϕ 0.61 [0.024] $\text{\textcircled{M}}$ B A $\text{\textcircled{M}}$ WAS ϕ 0.30 [0.012] $\text{\textcircled{M}}$ B A $\text{\textcircled{M}}$ -12>(2B) 68.7 [2.70] MAX WAS 67.9[66.2 [2.677/2.61] -13>(2C) 96.0 [3.78] WAS 3.78 -14>(5D)>(6C) REVISED PICTORIALLY | CSG | | 8-2-12 | M86467 |



NOTE

1 ROTATION:
STANDARD: WHEN FACING SHAFT END OF MOTOR, SHAFT TO ROTATE;
CLOCKWISE WHEN PORT "A" IS PRESSURIZED
COUNTERCLOCKWISE WHEN PORT "B" IS PRESSURIZED

REVERSE: WHEN FACING SHAFT END OF MOTOR, SHAFT TO ROTATE;
CLOCKWISE WHEN PORT "B" IS PRESSURIZED
COUNTERCLOCKWISE WHEN PORT "A" IS PRESSURIZED

2 MOUNTING TYPE: AJ
STANDARD (MAGNETO), 4 BOLT: ϕ 82.6 [3.25] PILOT
 ϕ 13.59 [0.535] HOLES ON ϕ 106.4 [4.19] BOLT CIRCLE
2.79 [0.110] PILOT LENGTH

REVIEWED FOR CLASSIFICATION PER ESP-042

DRAWING BASED ON ASME Y14.5M-1994

UNLESS OTHERWISE SPECIFIED ALL DIMENSIONS ARE IN INCHES MILLIMETERS

TOLERANCES

xx # REF

xxx # ONLY

UNSPECIFIED RADII ARE

UNSPECIFIED DRAFT ANGLES ARE

D SIZE

THE REPRODUCTION, DISTRIBUTION AND UTILIZATION OF THIS DOCUMENT AS WELL AS THE COMMUNICATION OF ITS CONTENTS TO OTHER WITHOUT EXPLICIT AUTHORIZATION IS PROHIBITED. OFFENDERS WILL BE HELD LIABLE FOR THE PAYMENT OF DAMAGES. ALL RIGHT RESERVED IN THE EVENT OF THE GRANT OF A PATENT, UTILITY MODEL OR DESIGN. (PER ISO 16016)

DRAWN BY/DATE MLL 02-27-02

CHECKED BY/DATE AGJ 03-15-02

ENGRG BY/DATE RTH 03-15-02

METALLURGY BY/DATE

THIRD ANGLE PROJECTION

DO NOT SCALE

MATERIAL/HEAT TREAT

TITLE

2000 SERIES MOTOR INSTALLATION

MICROINCHES NUMBER

MICROMETERS

ARITHMETICAL AVERAGE

A-671-026

SCALE 1/1 SHEET 1 OF 1