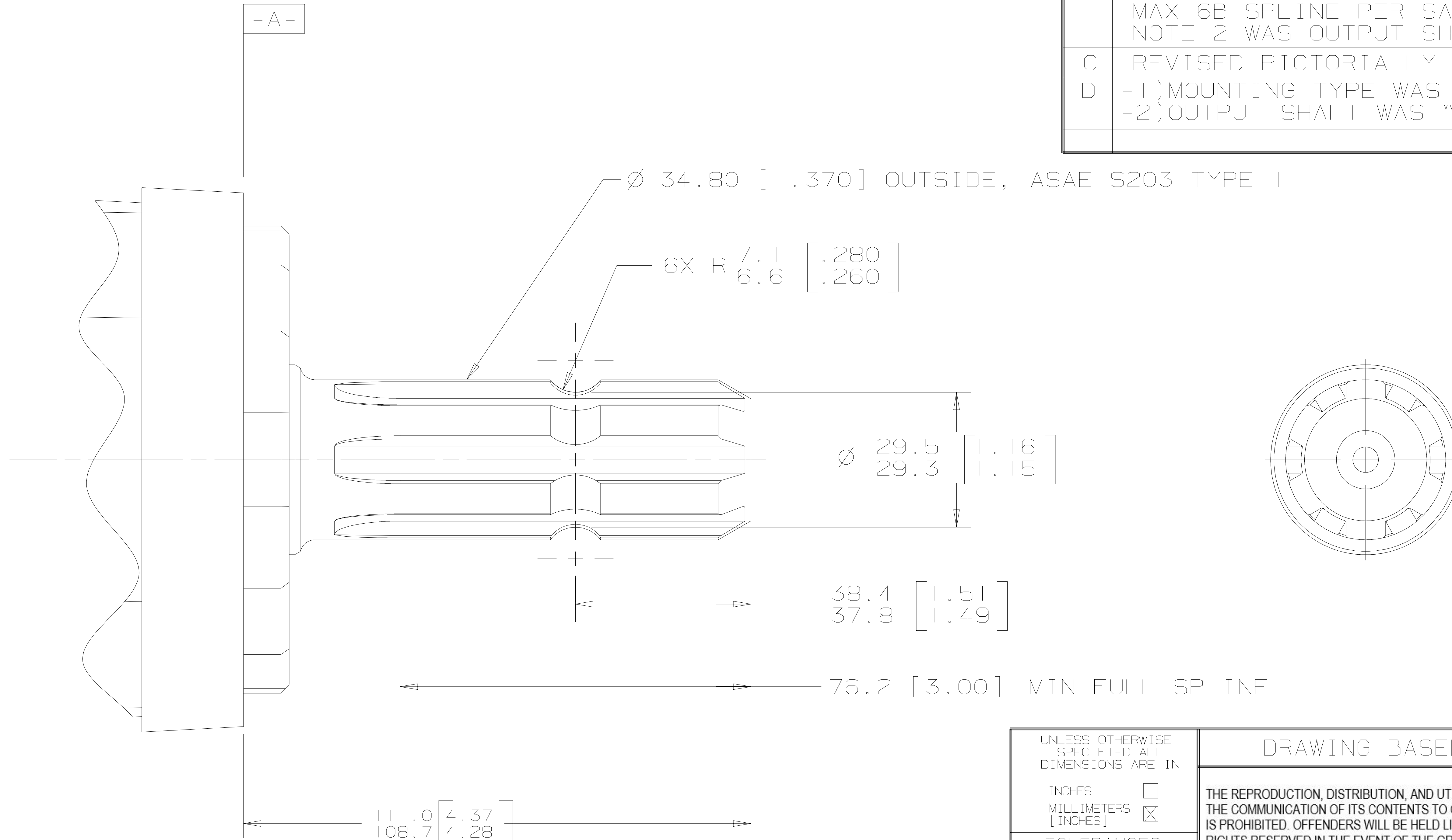


SYM	REVISION	BY	DATE	ECN
A	ENGINEERING RELEASE	AAK	10-25-04	M616860
B	-1) Ø34.80 [1.370] OUTSIDE, ASAE S203 TYPE 1 WAS Ø34.87 [1.373] MAX 6B SPLINE PER SAE J1170 -2) NOTE 2 WAS OUTPUT SHAFT OPTION 05	AGJ	12-21-04	50241
C	REVISED PICTORIALY	AGJ	12-21-05	50110
D	-1) MOUNTING TYPE WAS "B" -2) OUTPUT SHAFT WAS "35"	SSD	1-24-07	0002527



NOTE

- 1 MOUNTING TYPE: OPTION AB
- 2 OUTPUT SHAFT: OPTION 30

UNLESS OTHERWISE SPECIFIED ALL DIMENSIONS ARE IN INCHES <input type="checkbox"/> MILLIMETERS [INCHES] <input checked="" type="checkbox"/>	DRAWING BASED ON ANSI Y14.5M-1982	
	THE REPRODUCTION, DISTRIBUTION, AND UTILIZATION OF THIS DOCUMENT, AS WELL AS THE COMMUNICATION OF ITS CONTENTS TO OTHERS WITHOUT EXPLICIT AUTHORIZATION IS PROHIBITED. OFFENDERS WILL BE HELD LIABLE FOR THE PAYMENT OF DAMAGES. ALL RIGHTS RESERVED IN THE EVENT OF THE GRANT OF A PATENT, UTILITY MODEL, OR DESIGN. (PER ISO 16016)	
TOLERANCES .X ± ---- .XX ± REF .XXX ± ONLY < ----	DRAWN BY/DATE AAK 10/28/04 CHECKED BY/DATE AGJ 10/29/04 ENGRG BY/DATE JML 10/29/04 METALLURGY BY/DATE ----	MATERIAL/HEAT TREAT
UNSPECIFIED RADII ARE	THIRD ANGLE PROJECTION	TITLE 4000 SERIES MOTOR SHAFT INSTALLATION
UNSPECIFIED DRAFT ANGLES ARE	DO NOT SCALE	NUMBER A-606-023
DRAWING FORMAT CADD <input checked="" type="checkbox"/> MANUAL <input type="checkbox"/>	ARITHMETICAL AVERAGE	SCALE 1/1 SHEET 1 OF 1

