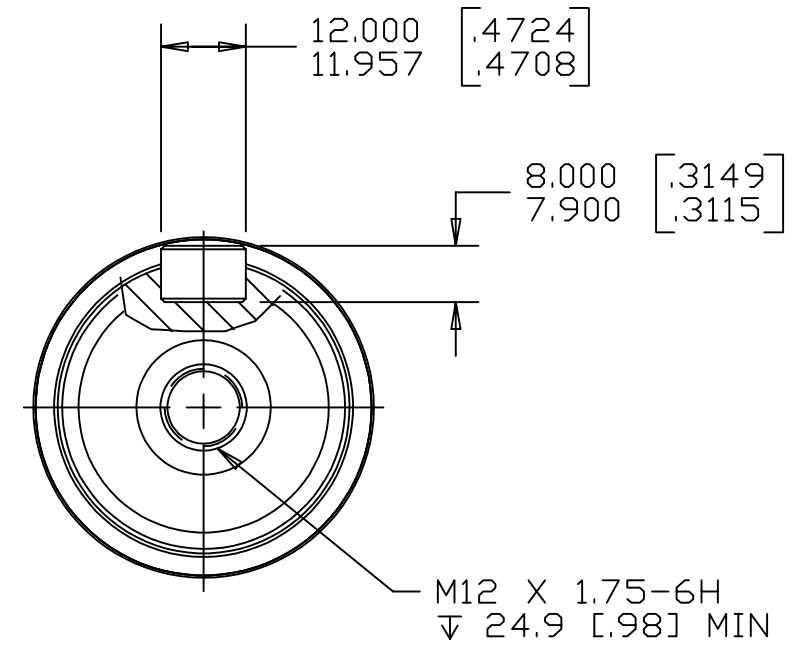


SYM	REVISION	BY	DATE	ECN
A	ENGINEERING RELEASE	SDR	2-8-92	21551
B	165.1/162.6 {6.50/6.40} WAS 165.4/162.3 {6.51/6.39}	AGJ	5-17-04	47918
C	-1>MOUNTING TYPE WAS "C" -2>OUTPUT SHAFT WAS "14"	SSD	1-24-07	0002527
D	{8A}ADDED MOUNTING TYPE OPTION "AD"	SSS	03-22-18	M107406



UNLESS OTHERWISE SPECIFIED ALL DIMENSIONS ARE IN INCHES <input type="checkbox"/> MILLIMETERS (INCHES) <input checked="" type="checkbox"/>	DRAWING BASED ON ANSI Y14.5M-1982		
	THE REPRODUCTION, DISTRIBUTION, AND UTILIZATION OF THIS DOCUMENT, AS WELL AS THE COMMUNICATION OF ITS CONTENTS TO OTHERS WITHOUT EXPLICIT AUTHORIZATION IS PROHIBITED. OFFENDERS WILL BE HELD LIABLE FOR THE PAYMENT OF DAMAGES. ALL RIGHTS RESERVED IN THE EVENT OF THE GRANT OF A PATENT, UTILITY MODEL, OR DESIGN. (PER ISO 16016)		
TOLERANCES .X ± ---- .XX ± REF .XXX ± ONLY < ----	DRAWN BY/DATE SDR 4/9/92 CHECKED BY/DATE KJR 7-8-92 ENGRG BY/DATE RVA 7-31-92 METALLURGY BY/DATE ----	MATERIAL/HEAT TREAT TITLE 4000 SERIES MOTOR SHAFT INSTALLATION	
UNSPECIFIED RADII ARE UNSPECIFIED DRAFT ANGLES ARE	THIRD ANGLE PROJECTION DO NOT SCALE	MICROINCHES <input type="checkbox"/> MICROMETERS (MICROINCHES) <input type="checkbox"/> ARITHMETICAL AVERAGE <input checked="" type="checkbox"/>	NUMBER A-607-010 SCALE 1/1 SHEET 1 OF 1

NOTE

- 1 MOUNTING TYPE: OPTION AC OR AD
- 2 OUTPUT SHAFT: OPTION 11