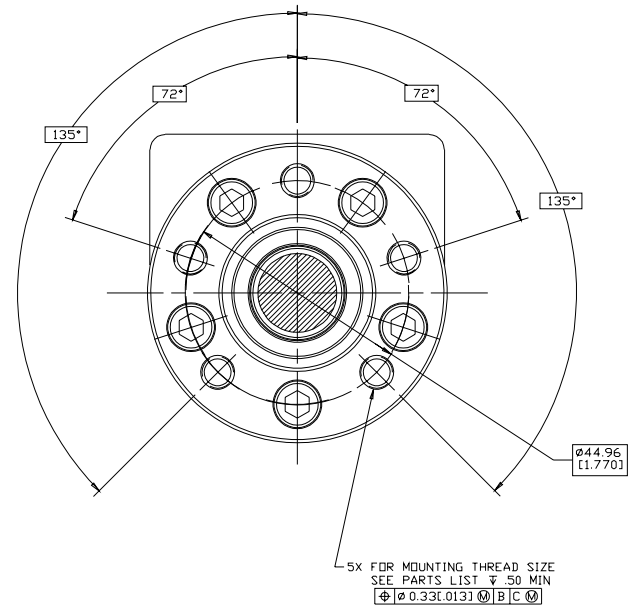
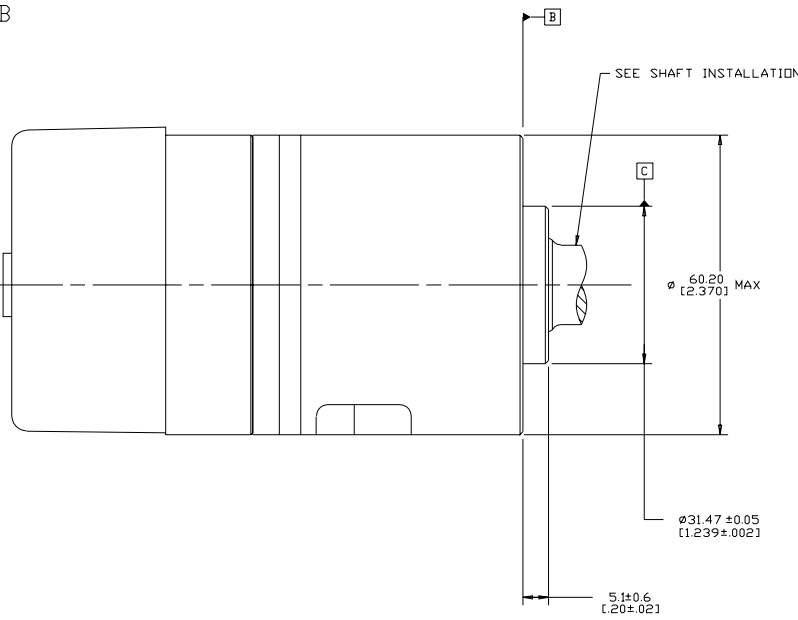
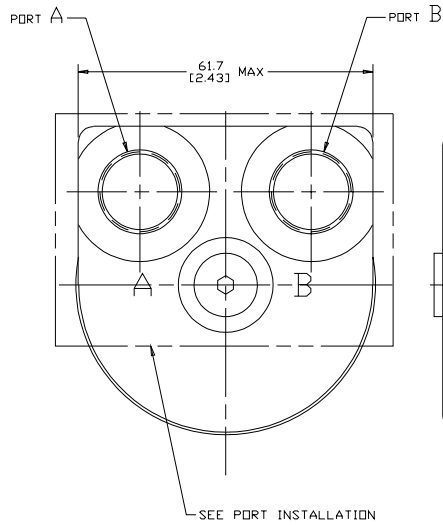


REV	DESCRIPTION	BY	CHK	DATE	ECN / MPS
A	ENGINEERING RELEASE	RAF		1-23-96	27675
B	-1>7C DIM 61.7(2.43) WAS 60.5(2.38) -2>UPDATED DRAWING AS PER ASME Y14.5-2009 STANDARD	AABC	CSG	10-02-14	M94255



NOTE

1 ROTATION:  
0 = STANDARD: WHEN FACING SHAFT END OF MOTOR SHAFT TO ROTATE  
CLOCKWISE WHEN PORT "A" IS PRESSURIZED  
COUNTERCLOCKWISE WHEN PORT "B" IS PRESSURIZED

1 = REVERSE: WHEN FACING SHAFT END OF MOTOR SHAFT TO ROTATE  
CLOCKWISE WHEN PORT "B" IS PRESSURIZED  
COUNTERCLOCKWISE WHEN PORT "A" IS PRESSURIZED

2 MOUNTING FLANGE:  
A = 5 BOLT: Ø 31.47 (1.239) X 5 (1.20) PILOT 1/4-28 UNF-2B  
MOUNTING HOLES ON Ø 45.0 (1.771) BOLT CIRCLE

B = 5 BOLT: Ø 31.47 (1.239) X 5 (1.20) PILOT M6 X 1.0-6H  
MOUNTING HOLES ON Ø 45.0 (1.771) BOLT CIRCLE

J = 5 BOLT: Ø 31.47 (1.239) X 5 (1.20) PILOT 1/4-28 UNF-2B  
MOUNTING HOLES ON Ø 45.0 (1.771) BOLT CIRCLE WITH  
3X 5/16-18 UNF-2B MOUNTING HOLES ON REAR

**REVIEWED FOR CLASSIFICATION PER ESP-042**

DRAWING BASED ON ASME Y14.5-2009

UNLESS OTHERWISE SPECIFIED ALL DIMENSIONS ARE IN INCHES

MILLIMETERS UNCHECKED

TOLERANCES

X ± —

XX ± —

XXX ± —

UNSPECIFIED RADIUS ARE: —

UNSPECIFIED DRAFT ANGLES ARE: —

D SIZE

THE REPRODUCTION, DISTRIBUTION AND UTILIZATION OF THIS DOCUMENT AS WELL AS THE COMMUNICATION OF ITS CONTENTS TO OTHERS WITHOUT EXPPLICIT AUTHORIZATION IS PROHIBITED. OFFENDERS WILL BE HELD LIABLE FOR THE PAYMENT OF DAMAGES. ALL RIGHTS RESERVED IN THE EVENT OF A PATENT, UTILITY MODEL, OR DESIGN (PER ISO 10000)

BROWN / BY DATE / CHECKED / BY DATE / FINISH / BY DATE / MATERIAL HEAT TREAT

UNSPECIFIED WEIGHT / BY DATE

UNSPECIFIED THIRD ANGLE PROJECTION / DO NOT SCALE

NUMBER / NUMBER OF SHEETS

NUMBER / SCALE / SHEET 1 OF 1

**J2 MOTOR INSTALLATION**

**A-817-033**

**1/1**

**1**

*Danfoss*