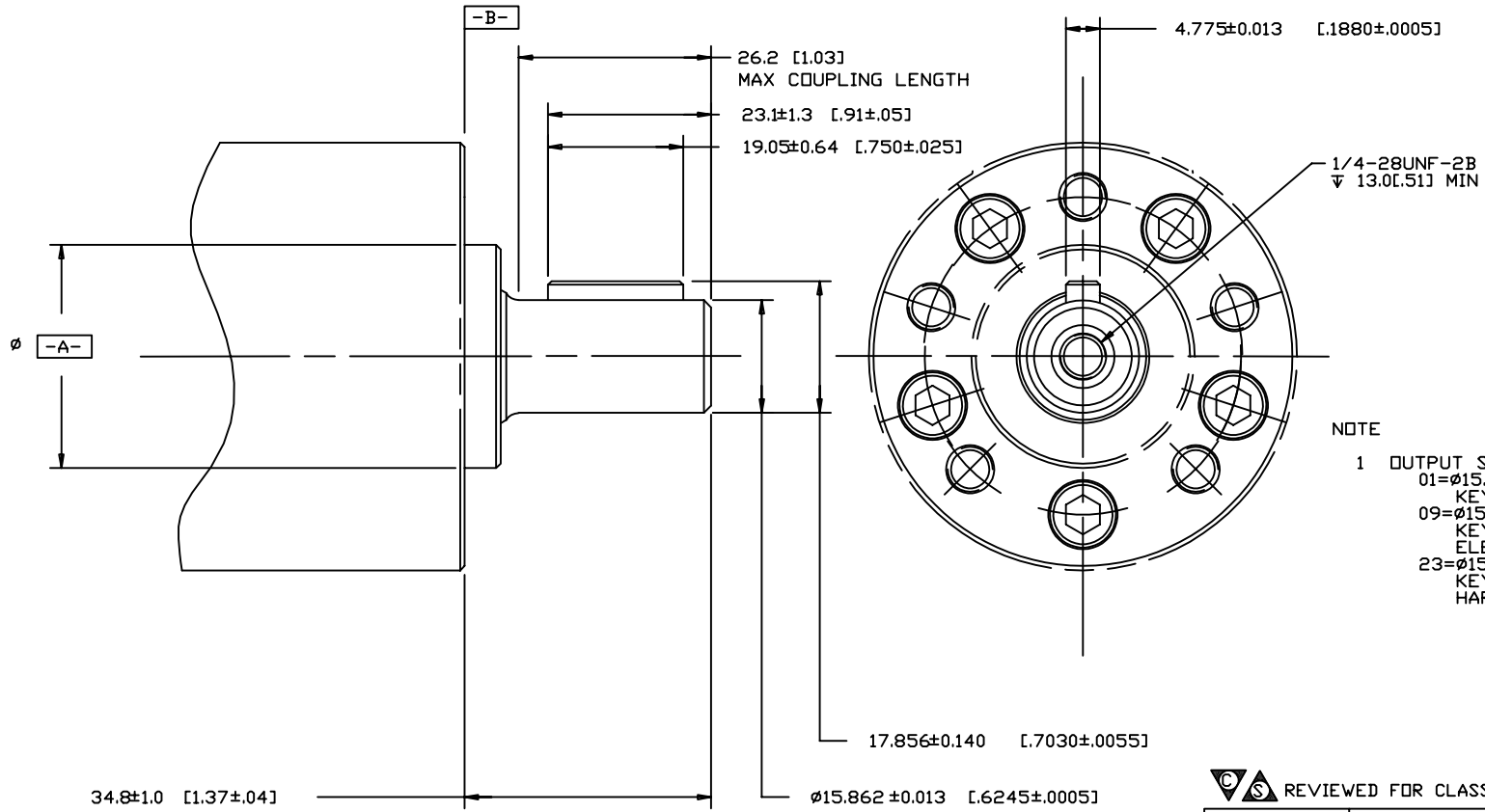


REV	DESCRIPTION	BY	CHK	DATE	ECN
A	RELEASE FOR SAMPLES AND ESTIMATE	MA		11-13-90	X4977
C	1)REVISED 2)ENGINEERING RELEASE	MA		7-22-91	20855
D	(2C) ▽ 13.0(.51) WAS ▽ 9.9(.39)	AGJ		5-5-92	17165
E	(2B) ADDED 09=Ø15.88 (.625)..... TO NOTE 1	GCB		10-8-92	23024
F	(4A)34.8±0.8 (.137±.03) WAS 35.1±1.0 (.138±.04)	JSB		3-27-08	ECR-8713
G	-1)(1B)ADDED OUTPUT SHAFT '23' -2)UPDATED 'DRAWING PROPRIETARY NOTE' -3)(1B)DESCRIPTION OF OUTPUT SHAFT 09 WAS '...CORROSION RESISTANT'	JSB		5-8-08	M72778
H	UPDATED TO CURRENT STANDARD	SSD		08-16-10	M79810



NOTE
 1 OUTPUT SHAFT:
 01=Ø15.88(.625) STRAIGHT WITH STRAIGHT KEY AND 1/4-28 THREADED HOLE
 09=Ø15.88(.625) STRAIGHT WITH STRAIGHT KEY AND 1/4-28 THREADED HOLE, ELECTROLESS NICKEL PLATED
 23=Ø15.88(.625) STRAIGHT WITH STRAIGHT KEY AND 1/4-28 THREADED HOLE, HARD CHROME PLATED

<input checked="" type="checkbox"/> Ø .25 [.010] A
<input type="checkbox"/> .08 [.003] B

CS REVIEWED FOR CLASSIFICATION PER ESP-042

DRAWING BASED ON ANSI Y14.5M-1982

THE REPRODUCTION, DISTRIBUTION, AND UTILIZATION OF THIS DOCUMENT, AS WELL AS THE COMMUNICATION OF ITS CONTENTS TO OTHERS WITHOUT EXPLICIT AUTHORIZATION IS PROHIBITED. OFFENDERS WILL BE HELD LIABLE FOR THE PAYMENT OF DAMAGES. ALL RIGHTS RESERVED IN THE EVENT OF THE GRANT OF A PATENT, UTILITY MODEL, OR DESIGN. (PER ISO 15016)

Danfoss

UNLESS OTHERWISE SPECIFIED ALL DIMENSIONS ARE IN INCHES <input type="checkbox"/> MILLIMETERS <input checked="" type="checkbox"/>	TOLERANCES .XX ± REF .XXX ± ONLY < ±	UNSPECIFIED RADI ARE _____	UNSPECIFIED DRAFT ANGLES ARE _____	THIRD ANGLE PROJECTION <input checked="" type="checkbox"/>	HORIZONTALS <input type="checkbox"/> VERTICALS <input type="checkbox"/> METRICAL AVERAGE <input checked="" type="checkbox"/>	NUMBER A-270-001	SCALE 2/1	SHEET 1 OF 1
DRAWN BY/DATE MA 10-1-90 CHECKED BY/DATE KQ 12-14-90 ENGR BY/DATE DJ 12-14-90 METALLURGY BY/DATE _____	MATERIAL/HEAT TREAT _____	TITLE J2 MOTOR SHAFT INSTALLATION						

C SIZE DO NOT SCALE