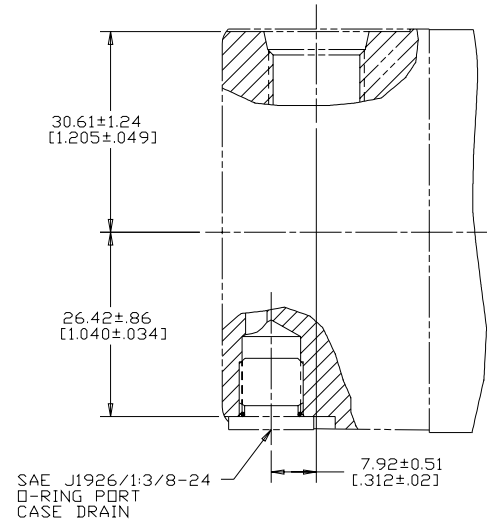
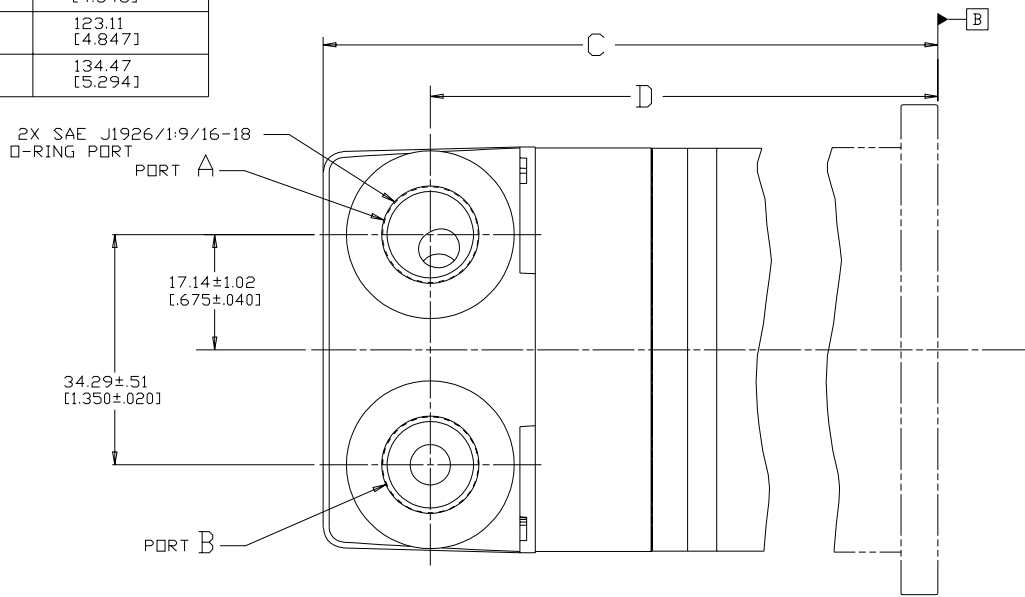


DISPL CODE	D	C MAX
05	90.55±1.14 [3.565±.045]	107.95 [4.250]
08	93.62±1.14 [3.686±.045]	111.02 [4.371]
10	95.86±1.14 [3.774±.045]	113.26 [4.459]
12	98.07±1.14 [3.861±.045]	115.47 [4.546]
19	105.71±1.14 [4.162±.045]	123.11 [4.847]
30	117.07±1.14 [4.609±.045]	134.47 [5.294]

REV	DESCRIPTION	BY	CHK	DATE	ECN
A	ENGINEERING RELEASE	RAF		1-23-96	27675
B	<4D>ADDED DISPL CODE 30	GCB		5-6-96	M15295
C	REVISED	SSD		7-19-10	M9626
D	-1>REVISED PICTORIALLY -2>REVISED TABULATION BLOCK -3>REVISED DIMENSIONS AS PER STACK UP -4>DRAWING UPDATED TO ASME Y14.5-2009 STANDARD	YUP	YUP	03-27-15	0062470



NOTE
1 PORT TYPE D

REVIEWED FOR CLASSIFICATION PER ESP -042

DRAWING BASED ON ASME Y14.5M-1994

UNLESS OTHERWISE SPECIFIED ALL DIMENSIONS ARE IN
 INCHES
 MILLIMETERS

TOLERANCES
 X = REF
 XXX = ONLY

UNSPECIFIED RADI ARE
 UNSPECIFIED DRAFT ANGLES ARE

D SIZE

THE REPRODUCTION, DISTRIBUTION, AND UTILIZATION OF THIS DOCUMENT, AS WELL AS THE COMMUNICATION OF ITS CONTENTS TO OTHERS WITHOUT EXPLICIT AUTHORIZATION IS PROHIBITED. OFFENDERS WILL BE HELD LIABLE FOR THE PAYMENT OF DAMAGES. ALL RIGHTS RESERVED IN THE EVENT OF THE GRANT OF A PATENT, UTILITY MODEL, OR DESIGN. (PER ISO 1016)

DRAWN BY/DATE: RAF 2-9-96
 CHECKED BY/DATE: SDR 2-21-96
 ENGRG BY/DATE: RVA 2-22-96
 METALLURGY BY/DATE: -----

MATERIAL/HEAT TREAT
 TITLE: J2 MOTOR PORT INSTALLATION

MICROINCHES MICROINCHES
 NUMBER
 ARITHMETICAL AVERAGE

SCALE 2/1 SHEET 1 OF 1

Danfoss

A-818-037