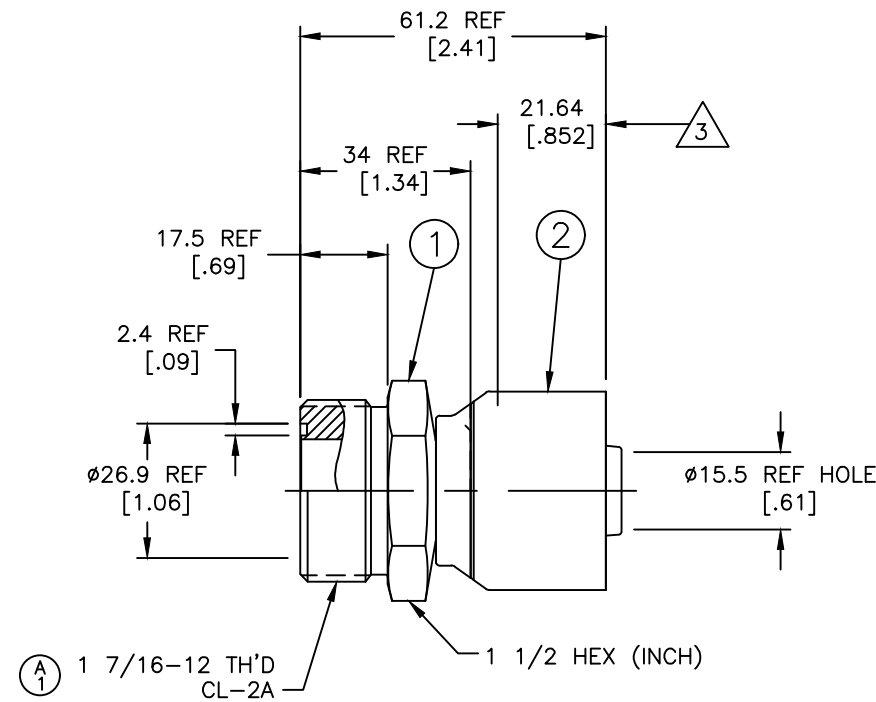


REVISIONS			
REV	DESCRIPTION	DATE	APPROVED
A	1) WAS 1 7/6-12 TH'D CL-2A	2005-03-18 L.W./W.R.H.	EN-F27752 DP-1612



METRIC

REV. A  
SH.  
12Z-E76  
DWG. NO.

12Z-E76	1SA16MR12	12Z-COO			
PART NUMBER	① NIPPLE ASSEMBLY	② SOCKET			
LIST OF MATERIALS					
ITEM NO.	MATERIAL	DRAWN	DRAWING TITLE		
1	STEEL	LWRAGGS	FLUID CONVEYANCE DIVISION FITTING ASSEMBLY ORS MALE, Z SERIES		
2	STEEL	CHECKED			
		W.R.HYDE			
		APPROVED			
		W.R.HYDE	SIZE	DRAWING NUMBER	REV
		RELEASE DATE	A2	12Z-E76	A
		2005-01-24	SCALE 1/1 DIST U CAGE CODE 01276 SHEET		
		EN-F27191			
		DP-1612			
		THIRD ANGLE PROJECTION			
<small>THE REPRODUCTION, DISTRIBUTION AND UTILIZATION OF THIS DOCUMENT AS WELL AS THE COMMUNICATION OF ITS CONTENTS TO OTHER WITHOUT EXPLICIT AUTHORIZATION IS PROHIBITED. OFFENDERS WILL BE HELD LIABLE FOR THE PAYMENT OF DAMAGES. ALL RIGHT RESERVED IN THE EVENT OF THE GRANT OF A PATENT, UTILITY MODEL OR DESIGN. (PER ISO 16016)</small>					

- 3. STAMP "TRADEMARK" AND "12Z-E76" PER ES 70. (LOCATE AS SHOWN)
- 2. CRIMP SOCKET PER ES 2409.
- 1. DIMENSIONS ARE IN MILLIMETERS [INCH].