

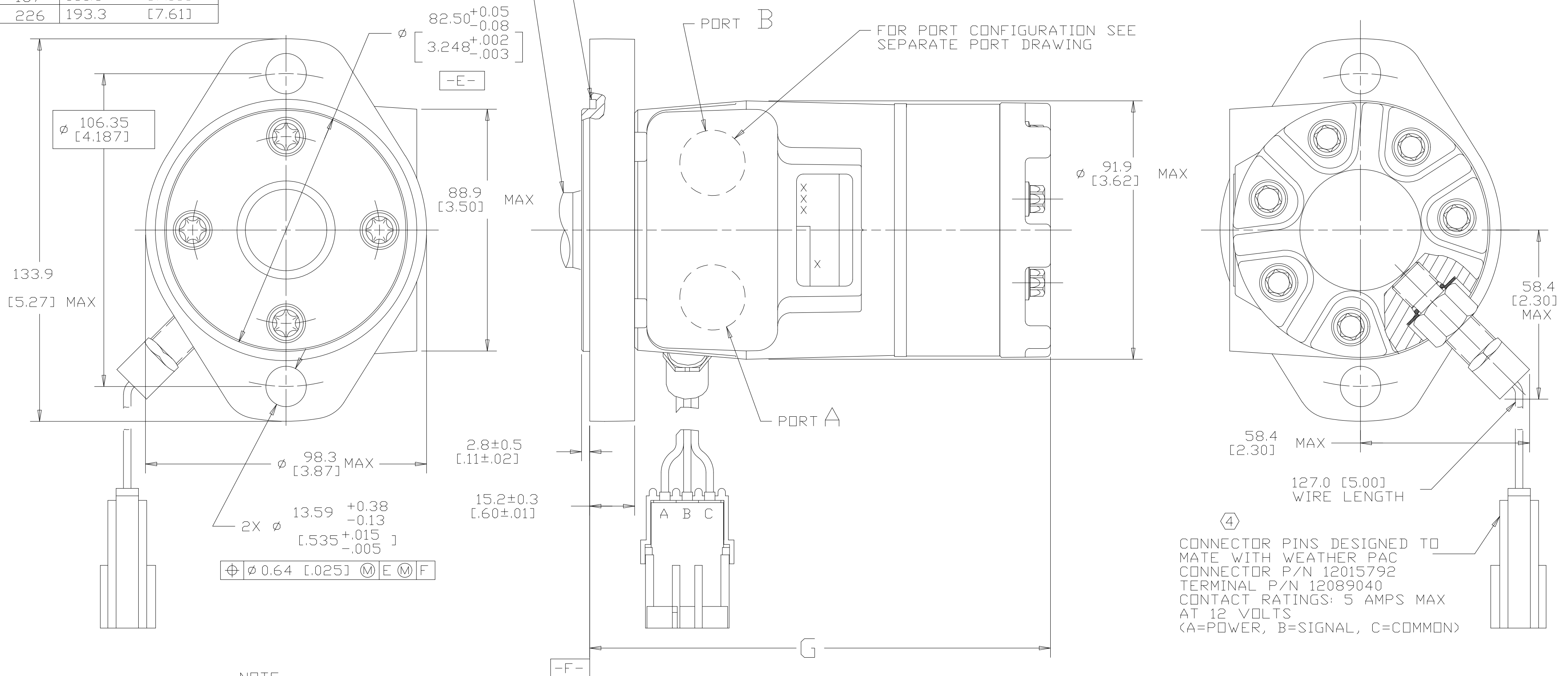
DISP. CODE	G MAX	
022	132.2	[5.21]
030	134.6	[5.30]
040	137.6	[5.42]
049	140.2	[5.52]
062	144.2	[5.68]
080	149.6	[5.89]
096	154.4	[6.08]
119	161.2	[6.35]
149	170.2	[6.70]
187	181.6	[7.15]
226	193.3	[7.61]

REV	DESCRIPTION	BY	CHK	DATE	ECN
A	ENGINEERING RELEASE	AGJ		10-11-95	M14284
B	ADDED SENSOR DIMENSIONS	MGF		11-11/97	30385
C	(4B)Ø13.59+0.38/-0.13 [5.35+0.015/-0.005] WAS Ø13.59±0.13 [5.35±0.005]	AGJ		1-28-02	39853
D	-1)X(4C) WAS 131.4 [5.17] MAX. -2)X(4B) WAS 96.8 [3.81] MAX.	AAK		4-7-04	46856
E	-1)X(4D)UPDATED TABLE FOR DISPL CODE -2)X(4A)NOTE 2 MOUNTING FLANGE WAS "A"	PM		03-27-07	0004355
F	(4A) NOTE 3 WAS CASE DRAIN :0..	SSPSB		12-26-15	0068068..

FOR SHAFT CONFIGURATION SEE SEPARATE SHAFT DRAWING

GROOVE PROVIDED FOR 82.6 [3.25] I.D. X 2.62 [0.103] CROSS SECTION O-RING (DASH NO. 152)

FOR PORT CONFIGURATION SEE SEPARATE PORT DRAWING



CONNECTOR PINS DESIGNED TO MATE WITH WEATHER PAC CONNECTOR P/N 12015792 TERMINAL P/N 12089040 CONTACT RATINGS: 5 AMPS MAX AT 12 VOLTS (A=POWER, B=SIGNAL, C=COMMON)

- NOTE
- 1 ROTATION STANDARD WHEN FACING SHAFT END OF MOTOR SHAFT TO ROTATE CLOCKWISE WHEN PORT "A" IS PRESSURIZED COUNTERCLOCKWISE WHEN PORT "B" IS PRESSURIZED REVERSE WHEN FACING SHAFT END OF MOTOR SHAFT TO ROTATE CLOCKWISE WHEN PORT "B" IS PRESSURIZED COUNTERCLOCKWISE WHEN PORT "A" IS PRESSURIZED
 - 2 MOUNTING FLANGE AA = STANDARD, 2 BOLT: Ø 82.6 [3.25] X 3.0 [0.12] PILOT Ø 13.59 [0.535] HOLES ON Ø 106.2 [4.18] BOLT CIRCLE
 - 3 CASE DRAIN 00 = NO CASE DRAIN
 - ④ SENSOR OUTPUT WILL BE 15 ELECTRICAL PULSES PER SHAFT REVOLUTION. SUPPLY VOLTAGE: 8 TO 28 Vdc OUTPUT VOLTAGE: LOW .5 Vdc AT 10 mA; HIGH Vs-1 Vdc

UNLESS OTHERWISE SPECIFIED ALL DIMENSIONS ARE IN INCHES <input type="checkbox"/> MILLIMETERS <input checked="" type="checkbox"/>		DRAWING BASED ON ANSI Y14.5M-1982	
TOLERANCES		THE REPRODUCTION, DISTRIBUTION AND UTILIZATION OF THIS DOCUMENT AS WELL AS THE COMMUNICATION OF ITS CONTENTS TO OTHER WITHOUT EXPLICIT AUTHORIZATION IS PROHIBITED. OFFENDERS WILL BE HELD LIABLE FOR THE PAYMENT OF DAMAGES. ALL RIGHT RESERVED IN THE EVENT OF THE GRANT OF A PATENT, UTILITY MODEL OR DESIGN. (PER ISO 16016)	
x ± ----	xx ± ----	DRAWN BY/DATE AGJ 10-13-95	MATERIAL/HEAT TREAT
.xxx ± ----	< ± ----	CHECKED BY/DATE RAF 10-13-95	
UNSPECIFIED RADII ARE ----	UNSPECIFIED DRAFT ANGLES ARE ----	ENGRG BY/DATE RVA 10-13-95	TITLE T MOTOR INSTALLATION
		METALLURGY BY/DATE ----	MICROINCHES <input type="checkbox"/> NUMBER A-821-041
DRAWING FORMAT CADD <input checked="" type="checkbox"/> MANUAL <input type="checkbox"/>	THIRD ANGLE PROJECTION	ARITHMETICAL AVERAGE <input checked="" type="checkbox"/>	SCALE 1/1 SHEET 1 OF 1