

DISPL CODE	G MAX	187	181.6 [7.15]
		226	193.3 [7.61]
018	132.2 [5.21]	298	215.0 [8.46]
022	132.2 [5.21]		
025	133.1 [5.24]		
030	134.6 [5.30]		
036	136.4 [5.37]		
040	137.6 [5.42]		
049	140.2 [5.52]		
062	144.2 [5.68]		
080	149.6 [5.89]		
096	154.4 [6.08]		
119	161.2 [6.35]		
149	170.2 [6.70]		

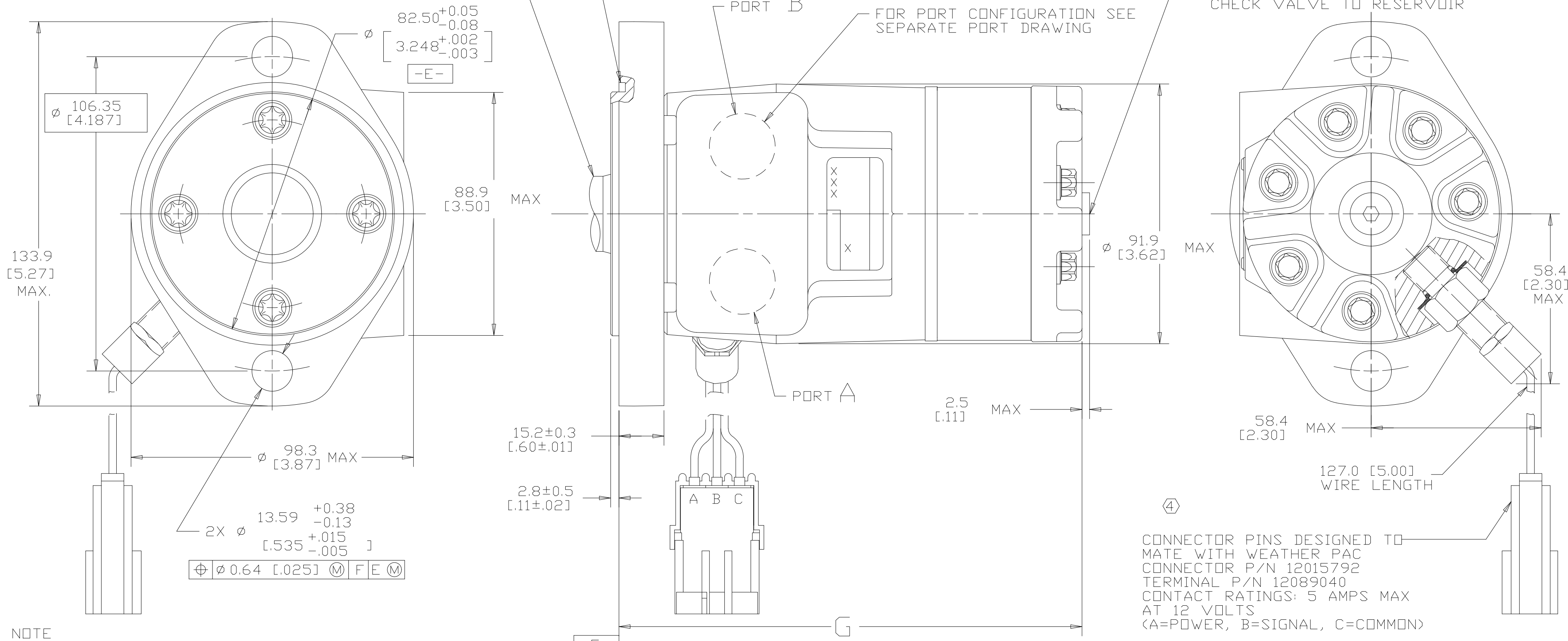
REV	DESCRIPTION	BY	CHK	DATE	ECN
A	ENGINEERING RELEASE	AGJ		10-11-95	M14284
B	ADDED SENSOR DIMENSIONS	MGF		11-11/97	30385
C	(4B)Ø13.59+0.38/-0.13 [.535+.015/-0.005] WAS Ø13.59±0.13 [.535±.005]	AGJ		1-28-02	39853
D	-1)X4C) WAS 131.4 [5.17] MAX. -2)X4B) WAS 96.8 [3.81] MAX.	AAK		04-07-04	46856
E	-1)X4D)UPDATED TABLE FOR DISPL CODE -2)X4A)NOTE 2 MOUNTING FLANGE WAS "A"	PM		03-27-07	0004355
F	(4A) NOTE 3 WAS CASE DRAIN :1..	SSP	SB	12-26-15	0068068_1

FOR SHAFT CONFIGURATION SEE SEPARATE SHAFT DRAWING

GROOVE PROVIDED FOR 82.6 [3.25] I.D. X 2.62 [.103] CROSS SECTION O-RING (DASH NO. 152)

FOR PORT CONFIGURATION SEE SEPARATE PORT DRAWING

SAE J1926/1:7/16-20 UNF-2B O-RING PORT, CASE DRAIN WHEN REQUIRED REMOVE O-RING PLUG DRAIN LINE MUST BE CONNECTED THRU 3.4 bar [50 lbf/in<sup>2</sup>] CHECK VALVE TO RESERVOIR



NOTE  
 1 ROTATION STANDARD WHEN FACING SHAFT END OF MOTOR SHAFT TO ROTATE CLOCKWISE WHEN PORT "A" IS PRESSURIZED COUNTERCLOCKWISE WHEN PORT "B" IS PRESSURIZED  
 REVERSE WHEN FACING SHAFT END OF MOTOR, SHAFT TO ROTATE CLOCKWISE WHEN PORT "B" IS PRESSURIZED COUNTERCLOCKWISE WHEN PORT "A" IS PRESSURIZED

2 MOUNTING FLANGE  
 AA = STANDARD, 2 BOLT: Ø 82.6 [3.25] X 3.0 [.12] PILOT Ø 13.59 [.535] HOLES ON Ø 106.2 [4.18] BOLT CIRCLE

3 CASE DRAIN  
 01 = 7/16-20 (END CAP)

④ SENSOR OUTPUT WILL BE 15 ELECTRICAL PULSES PER SHAFT REVOLUTION.  
 SUPPLY VOLTAGE: 8 TO 28 Vdc  
 OUTPUT VOLTAGE: LOW .5 Vdc AT 10 mA; HIGH Vs-1 Vdc

④ CONNECTOR PINS DESIGNED TO MATE WITH WEATHER PAC CONNECTOR P/N 12015792 TERMINAL P/N 12089040 CONTACT RATINGS: 5 AMPS MAX AT 12 VOLTS (A=POWER, B=SIGNAL, C=COMMON)

UNLESS OTHERWISE SPECIFIED ALL DIMENSIONS ARE IN INCHES <input type="checkbox"/> MILLIMETERS (INCHES) <input checked="" type="checkbox"/>		DRAWING BASED ON ANSI Y14.5M-1982	
TOLERANCES X ± ---- .XX ± ---- .XXX ± ---- < ± ----		THE REPRODUCTION, DISTRIBUTION AND UTILIZATION OF THIS DOCUMENT AS WELL AS THE COMMUNICATION OF ITS CONTENTS TO OTHER WITHOUT EXPLICIT AUTHORIZATION IS PROHIBITED. OFFENDERS WILL BE HELD LIABLE FOR THE PAYMENT OF DAMAGES. ALL RIGHT RESERVED IN THE EVENT OF THE GRANT OF A PATENT, UTILITY MODEL OR DESIGN. (PER ISO 16016)	
UNSPECIFIED RADII ARE ----		DRAWN BY/DATE AGJ 10-13-95	MATERIAL/HEAT TREAT
UNSPECIFIED DRAFT ANGLES ARE ----		CHECKED BY/DATE RAF 10-13-95	
DRAWING FORMAT CADD <input checked="" type="checkbox"/> MANUAL <input type="checkbox"/>		ENGRG BY/DATE RVA 10-13-95	TITLE
THIRD ANGLE PROJECTION		METALLURGY BY/DATE ----	T MOTOR INSTALLATION
DO NOT SCALE		MICROINCHES <input type="checkbox"/> NUMBER MICROMETERS (MICROINCHES) <input type="checkbox"/>	A-821-042
		ARITHMETICAL AVERAGE <input checked="" type="checkbox"/>	SCALE 1/1 SHEET 1 OF 1

