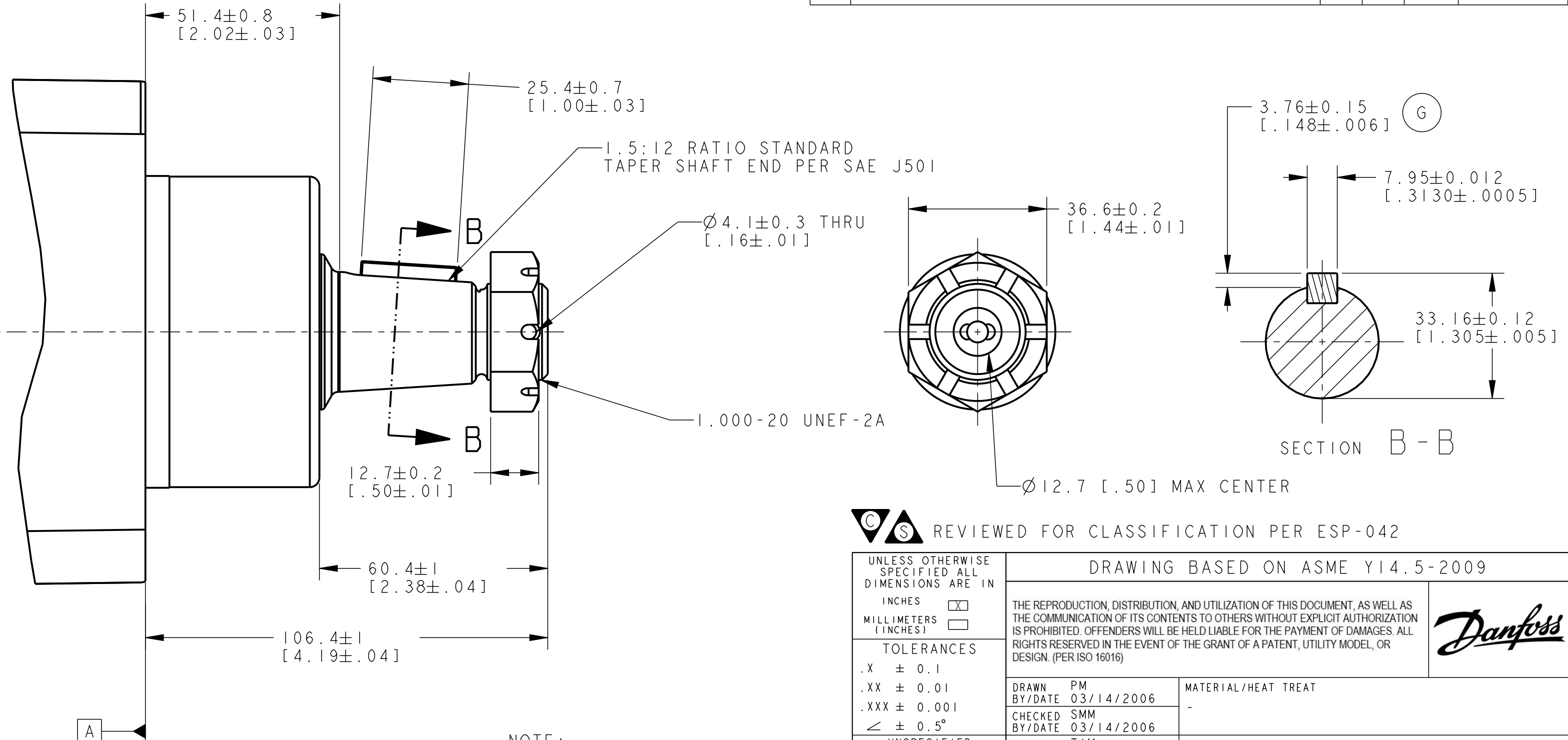


REV	DESCRIPTION	BY	CHK	DATE	ECN / MPS
A	RELEASE FOR SAMPLES AND ESTIMATES	PM		03/09/06	X-54953
F	-1)DRAWING REVISED FOR STACK-UP -2)REVISED SECTION B-B -3)ADDED MOUNTINGTYPE AF TO NOTE 1	YUP	YUP	01/19/16	M98843A
G	ADDED .148±.006	SMK	PJ	09/14/17	0083558



NOTE:
 1 MOUNTING TYPE : AA, AE, AF
 2 OUTPUT SHAFT : 02, 24

C/S REVIEWED FOR CLASSIFICATION PER ESP-042

UNLESS OTHERWISE SPECIFIED ALL DIMENSIONS ARE IN INCHES MILLIMETERS (INCHES)

TOLERANCES
 .X ± 0.1
 .XX ± 0.01
 .XXX ± 0.001
 < ± 0.5°

UNSPECIFIED RADII ARE: ---
 UNSPECIFIED DRAFT ANGLES ARE: ---°

B SIZE

DRAWING BASED ON ASME Y14.5-2009

THE REPRODUCTION, DISTRIBUTION, AND UTILIZATION OF THIS DOCUMENT, AS WELL AS THE COMMUNICATION OF ITS CONTENTS TO OTHERS WITHOUT EXPLICIT AUTHORIZATION IS PROHIBITED. OFFENDERS WILL BE HELD LIABLE FOR THE PAYMENT OF DAMAGES. ALL RIGHTS RESERVED IN THE EVENT OF THE GRANT OF A PATENT, UTILITY MODEL, OR DESIGN. (PER ISO 16016)

Danfoss

DRAWN PM BY/DATE 03/14/2006
 CHECKED SMM BY/DATE 03/14/2006
 ENGRG TIM BY/DATE 03/14/2006
 METALLURGY --- BY/DATE ---

MATERIAL/HEAT TREAT -

TITLE DELTA MOTOR SHAFT INSTALLATION

NUMBER A-2824-002
 SCALE 1/1 SHEET 1 OF 1

THIRD ANGLE PROJECTION
 DO NOT SCALE
 ARITHMETICAL AVERAGE