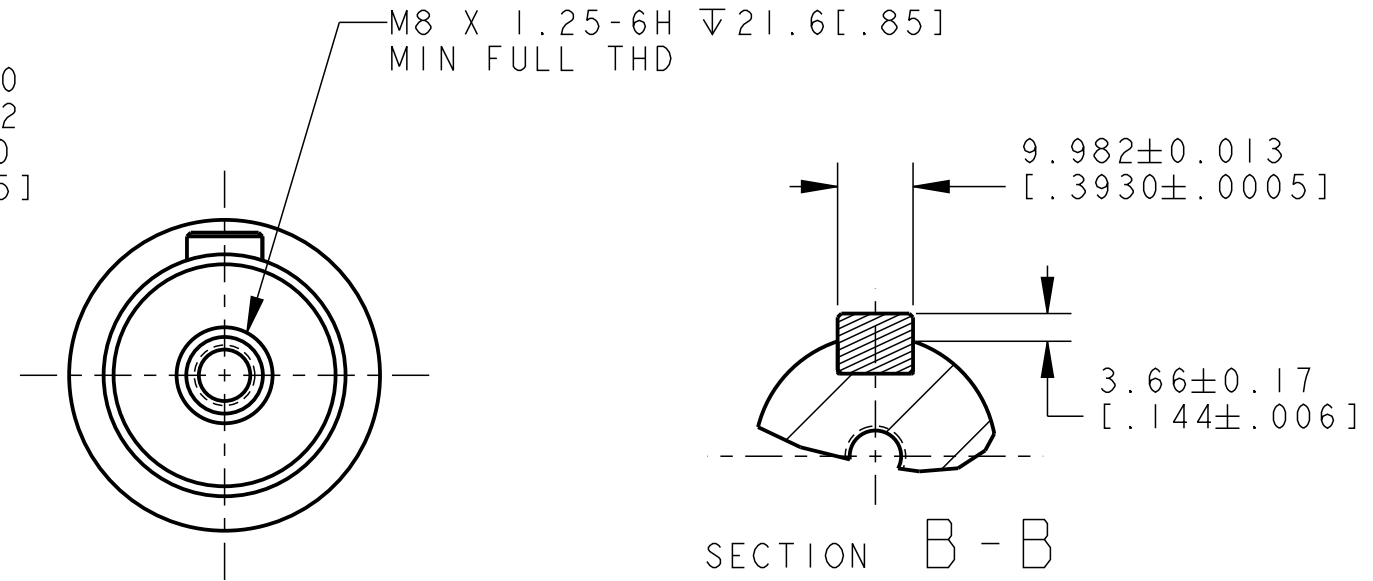
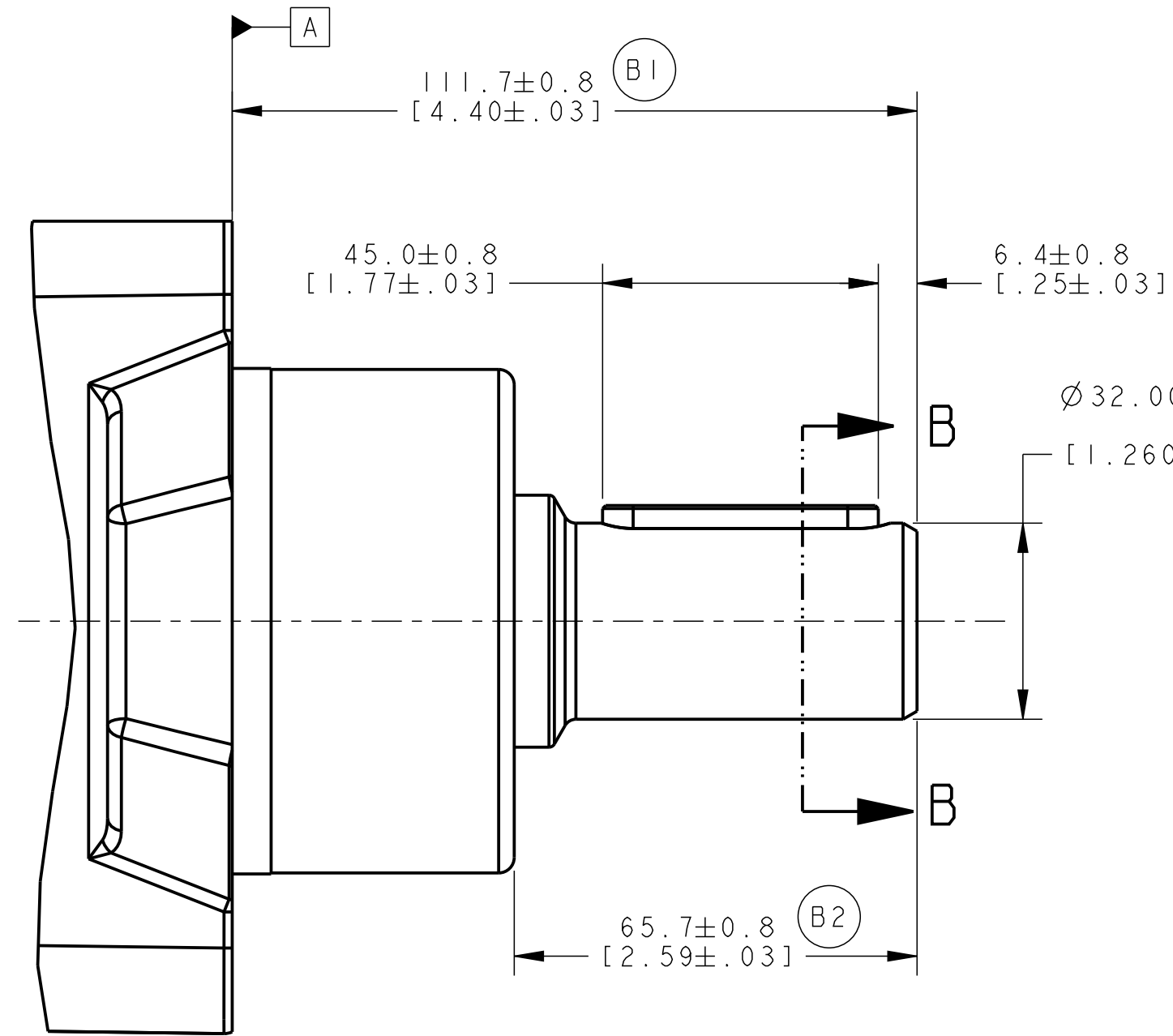


REV	DESCRIPTION	BY	CHK	DATE	ECN / MPS
A	ENGINEERING RELEASE	PM		09/07/06	M68115
B	-1) WAS 110.2±0.8 [4.34±.03] -2) WAS 61.7±0.8 [2.53±.03]	AMM		03/28/07	0004341
C	-1) 32.000 +0.000/-0.012 [1.2600 +.0000/- .0005] WAS 32.00±0.03 [1.260±.001] -2) DRAWING UPDATED TO ASME Y14.5-2009	CSG		01/14/15	0061464



NOTE:
 1 MOUNTING TYPE : AA
 2 OUTPUT SHAFT : 08

CS REVIEWED FOR CLASSIFICATION PER ESP-042

DRAWING BASED ON ASME Y14.5-2009

UNLESS OTHERWISE SPECIFIED ALL DIMENSIONS ARE IN INCHES MILLIMETERS (INCHES)

TOLERANCES
 .X ± ----
 .XX ± REF
 .XXX ± ONLY
 < ± ----

UNSPECIFIED RADII ARE:
 -

UNSPECIFIED DRAFT ANGLES ARE:
 °

B SIZE

THE REPRODUCTION, DISTRIBUTION, AND UTILIZATION OF THIS DOCUMENT, AS WELL AS THE COMMUNICATION OF ITS CONTENTS TO OTHERS WITHOUT EXPLICIT AUTHORIZATION IS PROHIBITED. OFFENDERS WILL BE HELD LIABLE FOR THE PAYMENT OF DAMAGES. ALL RIGHTS RESERVED IN THE EVENT OF THE GRANT OF A PATENT, UTILITY MODEL, OR DESIGN. (PER ISO 16016)

Danfoss

DRAWN PM
 BY/DATE 09/21/2006

CHECKED TIM
 BY/DATE 09/21/2006

ENGRG TIM
 BY/DATE 09/21/2006

METALLURGY -
 BY/DATE -

MATERIAL/HEAT TREAT
 -

TITLE
 DELTA MOTOR SHAFT INSTALLATION

MICROINCHES
 MICROMETERS (MICROINCHES)

THIRD ANGLE PROJECTION

DO NOT SCALE

ARITHMETICAL AVERAGE

NUMBER
 A-2824-008

SCALE 1/1 SHEET 1 OF 1