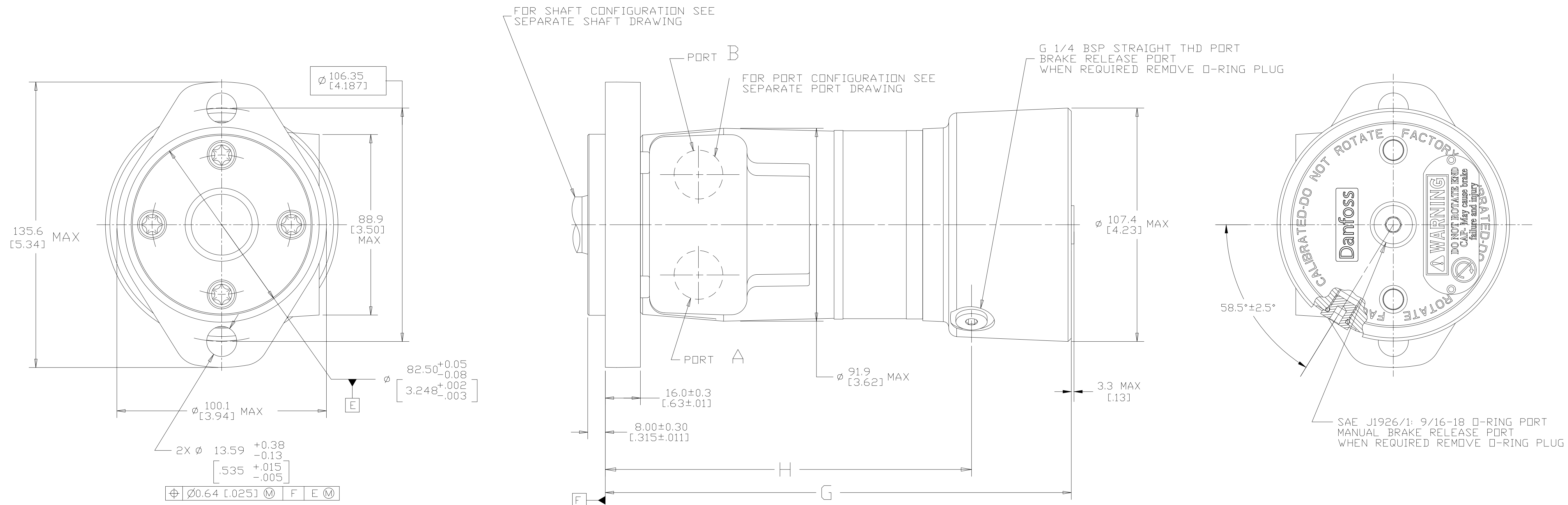


| DISPL CODE | G MAX | H |
|------------|--------------|----------------------|
| 022 | 191.0 [7.52] | 144.7±0.9 [5.70±.03] |
| 024 | 191.5 [7.54] | 145.3±0.9 [5.72±.03] |
| 030 | 193.3 [7.61] | 147.1±0.9 [5.79±.03] |
| 036 | 195.1 [7.68] | 148.8±0.9 [5.86±.03] |
| 040 | 196.3 [7.73] | 150.1±0.9 [5.90±.03] |
| 049 | 199.1 [7.84] | 152.8±0.9 [6.01±.03] |
| 062 | 202.9 [7.99] | 156.6±0.9 [6.17±.03] |
| 080 | 208.3 [8.20] | 162.0±0.9 [6.38±.03] |
| 096 | 213.4 [8.40] | 166.9±0.9 [6.57±.03] |
| 119 | 220.0 [8.66] | 173.7±0.9 [6.84±.03] |
| 149 | 229.1 [9.02] | 182.7±0.9 [7.19±.03] |
| 187 | 240.3 [9.46] | 194.1±0.9 [7.64±.03] |
| 226 | 252.0 [9.92] | 205.7±0.9 [8.10±.03] |

| REV | DESCRIPTION | BY | CHK | DATE | ECN / MPS |
|-----|---|-----|-----|----------|-----------|
| A | ENGINEERING RELEASE | SMM | | 08-12-04 | 49031 |
| B | -1>(7B)Ø98.6(3.88)MAX WAS Ø96.8(3.81)MAX -2>(8C)134.1(5.28)MAX WAS 131.4(5.17)MAX | VJP | | 04-07-04 | 46856 |
| C | -1>(8C) 135.6 (5.34) WAS 134.1 (5.28) -2>(7B) 100.1 (3.94) WAS 98.6 (3.88) -3>(3C) 107.4(4.23) WAS 4.20(106.7) -4>(3B) 58.5°±2.5° WAS 58.5° -5>(7B) Ⓢ [Ø0.64 (0.025) Ⓜ F E Ⓜ] WAS Ⓢ [Ø0.64 (0.025) Ⓜ E F] -6>(5B) 8.00±0.30 WAS 8.0±0.3-7>(2B)SAE J1926/1...WAS 7/16-20 UNF... | CSG | HRK | 06-10-10 | M79365 |
| D | -1>(2C)REVISED PICTORIALLY -2>UPDATED AS PER CURRENT STANDARD | YIS | AAB | 06-28-11 | 0032984 |
| E | -1>(3C)<2C>REVISED PICTORIALLY -2>(3B) ADDED 3.3(13) MAX -3>(2B)SAE J1926/1: 9/16-18..WAS 7/16-20 UNF-2B... | SSP | CSG | 12-28-15 | 0068064 |



NOTE

1 ROTATION STANDARD WHEN FACING SHAFT END OF MOTOR SHAFT TO ROTATE CLOCKWISE WHEN PORT "A" IS PRESSURIZED COUNTERCLOCKWISE WHEN PORT "B" IS PRESSURIZED

REVERSE WHEN FACING SHAFT END OF MOTOR SHAFT TO ROTATE CLOCKWISE WHEN PORT "B" IS PRESSURIZED COUNTERCLOCKWISE WHEN PORT "A" IS PRESSURIZED

2 MOUNTING TYPE
MA = 2 BOLT STD: 82.50 (3.248) DIA. X 8.13 (.320) PILOT, 13.59 (.535) DIA. MOUNTING HOLES ON 106.35 (4.187) DIA. B.C.

REVIEWED FOR CLASSIFICATION PER ESP-042

DRAWING BASED ON ASME Y14.5M-1994

UNLESS OTHERWISE SPECIFIED ALL DIMENSIONS ARE IN INCHES [] MILLIMETERS [X]

TOLERANCES

| | | |
|------|---|------|
| .X | ± | ---- |
| .XX | ± | ---- |
| .XXX | ± | ---- |
| < | ± | ---- |

UNSPECIFIED RADII ARE: ----

UNSPECIFIED DRAFT ANGLES ARE: °

THIRD ANGLE PROJECTION

DO NOT SCALE

ARITHMETICAL AVERAGE

THE REPRODUCTION, DISTRIBUTION AND UTILIZATION OF THIS DOCUMENT AS WELL AS THE COMMUNICATION OF ITS CONTENTS TO OTHER WITHOUT EXPLICIT AUTHORIZATION IS PROHIBITED. OFFENDERS WILL BE HELD LIABLE FOR THE PAYMENT OF DAMAGES. ALL RIGHT RESERVED IN THE EVENT OF THE GRANT OF A PATENT, UTILITY MODEL OR DESIGN. (PER ISO 16016)

DRAWN BY/DATE: SMM 08-17-04

CHECKED BY/DATE: AGJ 08-17-04

ENGRG BY/DATE: JDM 08-17-04

METALLURGY BY/DATE: ----

MATERIAL/HEAT TREAT: ----

TITLE: T MOTOR W/BRAKE INSTALLATION

NUMBER: A-1481-012

SCALE: 1/1 SHEET 1 OF 1

Danfoss