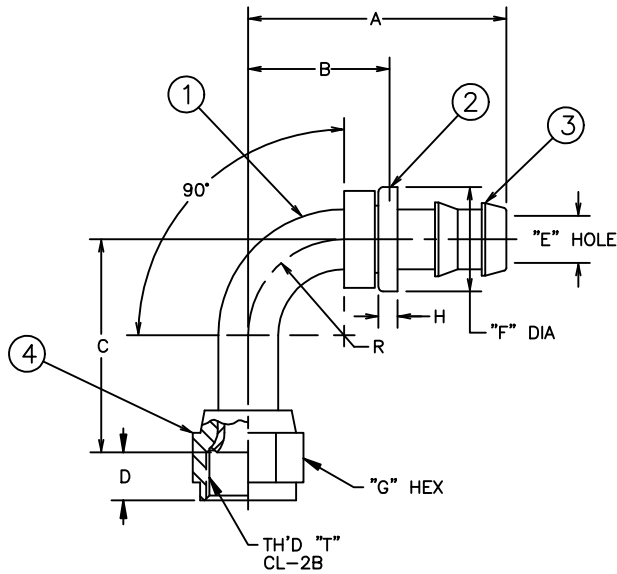


PART NUMBER	TH'D "T"	A ±.062	B REF	C ±.062	D REF	E REF	F ±.010	G REF	H REF	R REF
190516-6S	9/16-18	1.695	.83	.851	.40	.24	.725	.69	.16	.50

REVISIONS			
REV.	DESCRIPTION	DATE	APPROVED
C	REDRAWN ON CAD - LAST REV. "B" (1) NOTE #1(b) WAS: "CADMIUM PLATE PER ACES 16P6" (2) .24 WAS .30	3-18-92	EN-F12791 ER-F12791
D	(1) ADDED NOTE #3	9-24-92 J.A.B.	EN-F13373 DAI-23967



②

99
+
F2

REV. D
SH. 190516-S

DWG. NO.

190516-6S	409009-6S	4213-1-6B	4131-6S	210201-6S
AEROQUIP PART NUMBER	① ELBOW	③ HOSE CAP	② NIPPLE	④ NUT
LIST OF MATERIALS				
ITEM NO.	MATERIAL	DATE	DRAWING TITLE	
1	STEEL	3-18-92	FLUID CONVEYANCE DIVISION	
2	BRASS	3-25-92	FITTING ASSEMBLY	
3	STEEL	3-25-92	90°, SAE 37° SWIVEL, 2556 HOSE	
4	STEEL	3-25-92	DRAWING NUMBER	
		PROJECT NO. EN-F12791	APC NO.	190516-S
		DESIGN APPROVED	SIZE (CAGE) CODE NO. C 01276	SHEET
		APPROVED	U	

③ CAN BE MADE FROM TUBING PER SPECIFICATIONS ON ELBOW DRAWING.

①

2. FOR OTHER SIZES SEE 191321-S.

1. PROCESS AS FOLLOWS:

- (a) BRAZE PER ACES 67P3 OR P26.
- (b) ZINC PLATE PER ACES 16P47.
- (c) ASSEMBLE NUT AND FLARE PER FF481.
- (d) ASSEMBLE CAP.

①

THE REPRODUCTION, DISTRIBUTION AND UTILIZATION OF THIS DOCUMENT AS WELL AS THE COMMUNICATION OF ITS CONTENTS TO OTHER WITHOUT EXPLICIT AUTHORIZATION IS PROHIBITED. OFFENDERS WILL BE HELD LIABLE FOR THE PAYMENT OF DAMAGES. ALL RIGHT RESERVED IN THE EVENT OF THE GRANT OF A PATENT, UTILITY MODEL OR DESIGN. (PER ISO 16016)

↑

CONVERTED DRAWING | CADAM to AutoCAD | 9/98