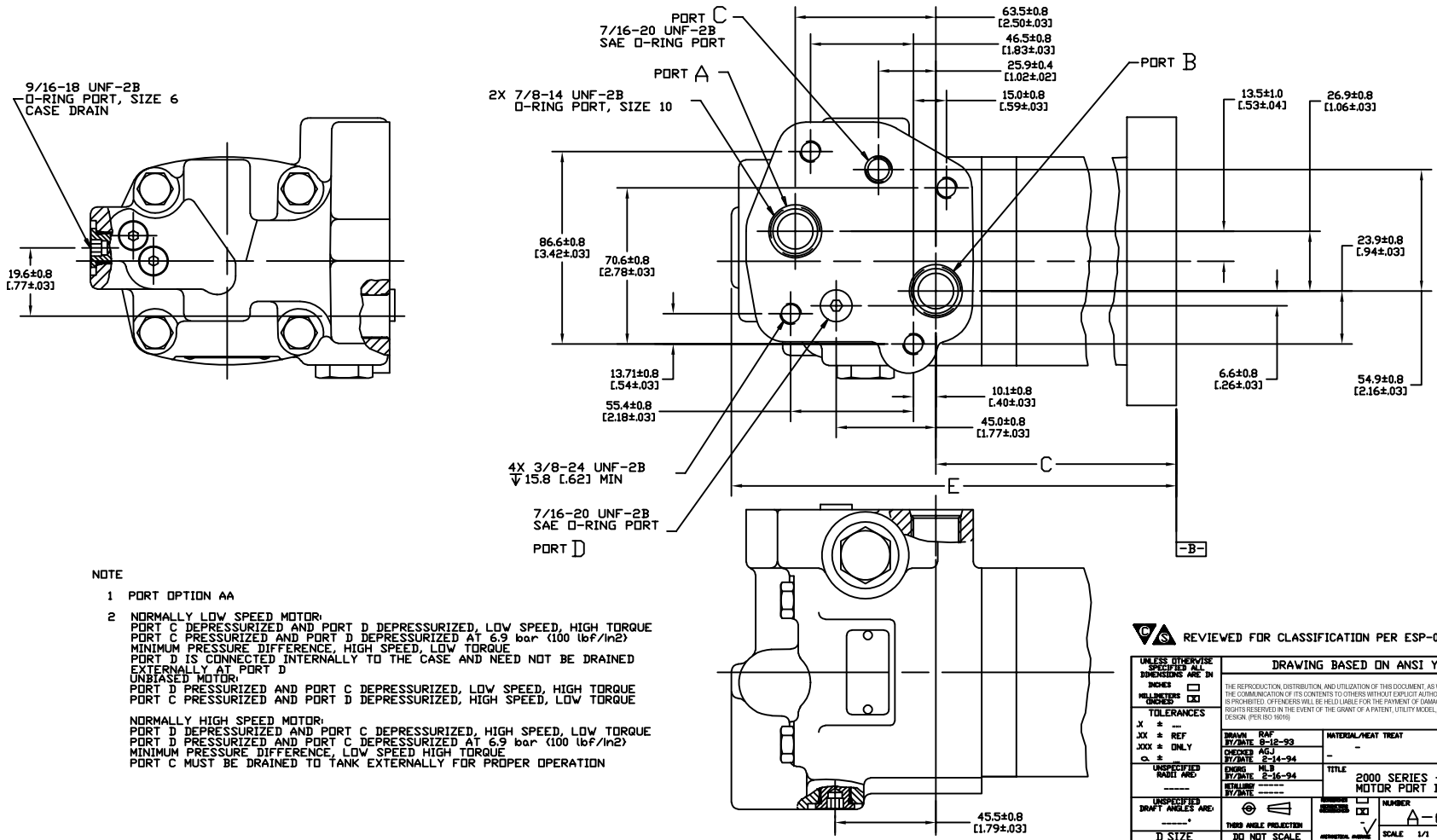


8			7			6			5			4			3			2			1		
MOUNTING TYPE AC,AH,AU,AF			MOUNTING TYPE AG			MOUNTING TYPE AJ			MOUNTING TYPE AE														
DISP	C	E MAX	DISP	C	E MAX	DISP	C	E MAX	DISP	C	E MAX	DISP	C	E MAX									
049	136.6-138.2 [5.38-5.44]	231.7 [9.12]	049	124.7-126.3 [4.91-4.97]	219.8 [8.65]	049	140.2-142.3 [5.52-5.60]	235.8 [9.28]	049	78.2-80.3 [3.08-3.16]	173.8 [6.84]												
062	141.3-142.9 [5.56-5.63]	236.4 [9.31]	062	129.3-131.0 [5.09-5.16]	224.4 [8.84]	062	144.8-147.0 [5.70-5.79]	240.4 [9.47]	062	82.9-85.0 [3.26-3.35]	178.5 [7.03]												
080	147.7-149.3 [5.82-5.88]	242.8 [9.56]	080	135.8-137.4 [5.35-5.41]	230.9 [9.09]	080	151.3-153.4 [5.96-6.04]	246.9 [9.72]	080	89.3-91.4 [3.52-3.60]	184.9 [7.28]												
096	147.7-149.3 [5.82-5.88]	242.8 [9.56]	096	135.8-137.4 [5.35-5.41]	230.9 [9.09]	096	151.3-153.4 [5.96-6.04]	246.9 [9.72]	096	89.3-91.4 [3.52-3.60]	184.9 [7.28]												
119	154.4-156.1 [6.08-6.14]	249.5 [9.82]	119	142.5-144.1 [5.61-5.67]	237.6 [9.35]	119	158.0-160.1 [6.22-6.30]	253.6 [9.98]	119	96.0-98.1 [3.78-3.86]	191.6 [7.54]												
149	163.5-165.1 [6.44-6.50]	258.6 [10.18]	149	151.5-153.2 [5.97-6.03]	246.6 [9.71]	149	167.0-169.2 [6.58-6.66]	262.6 [10.34]	149	105.1-107.2 [4.14-4.22]	200.7 [7.90]												
187	174.8-176.5 [6.88-6.95]	270.0 [10.63]	187	162.9-164.5 [6.41-6.48]	258.0 [10.16]	187	178.4-180.5 [7.02-7.11]	274.0 [10.79]	187	116.4-118.6 [4.58-4.67]	212.0 [8.35]												
240	190.8-192.4 [7.51-7.57]	285.9 [11.26]	240	178.8-180.5 [7.04-7.10]	273.9 [10.79]	240	194.3-196.5 [7.65-7.73]	289.9 [11.42]	240	132.4-134.5 [5.21-5.30]	228.0 [8.98]												
298	208.2-209.8 [8.20-8.26]	303.3 [11.94]	298	196.2-197.9 [7.73-7.79]	291.3 [11.47]	298	211.7-213.9 [8.34-8.42]	307.3 [12.10]	298	149.8-151.9 [5.90-5.98]	245.4 [9.66]												

SYM	REVISION	BY	DATE	ECN
A	ENGINEERING RELEASE	RAF	12/22/98	24603
B	(7)ADDED TYPE U TO TAB BLOCK	GCB	5-22-99	MIS457
C	REVISED	AGJ	5-18-99	44305
D	(8)ADDED MOUNTING TYPE "V"	HRK	6-19-99	M73399
E	(8)REMOVED MOUNTING TYPE "V"	HRK	6-27-99	ECR1666
F	REVISED	SSD	07-28-99	M76323
G	(1)MOUNTING TYPE AND PORT TYPE CODE UPDATED AS PER CURRENT ESP -2)ALL DIM. UPDATED FOR BILATERAL TOL. -3)TAB FOR MOUNTING "V" REMOVED	SKS	08-10-10	0021363
H	ALL DISPLACEMENT CODE UPDATED AS PER CURRENT ESP	SMT	10-27-10	M80419

MOUNTING TYPE AB		
DISP	C	E MAX
049	96.5-98.1 [3.80-3.86]	191.6 [7.54]
062	101.1-102.8 [3.98-4.05]	196.2 [7.73]
080	107.6-109.2 [4.24-4.30]	202.7 [7.98]
096	107.6-109.2 [4.24-4.30]	202.7 [7.98]
119	114.3-115.9 [4.50-4.56]	209.4 [8.24]
149	123.3-125.0 [4.86-4.92]	218.4 [8.60]
187	134.7-136.3 [5.30-5.37]	229.8 [9.05]
240	150.6-152.3 [5.93-5.99]	245.7 [9.68]
298	168.0-169.7 [6.62-6.68]	263.1 [10.36]



NOTE

- PORT OPTION AA
- NORMALLY LOW SPEED MOTOR:
 PORT C DEPRESSURIZED AND PORT D DEPRESSURIZED, LOW SPEED, HIGH TORQUE
 PORT C PRESSURIZED AND PORT D DEPRESSURIZED AT 6.9 bar (100 lbf/in²)
 MINIMUM PRESSURE DIFFERENCE, HIGH SPEED, LOW TORQUE
 PORT D IS CONNECTED INTERNALLY TO THE CASE AND NEED NOT BE DRAINED EXTERNALLY AT PORT D
 UNBIASED MOTOR:
 PORT D PRESSURIZED AND PORT C DEPRESSURIZED, LOW SPEED, HIGH TORQUE
 PORT C PRESSURIZED AND PORT D DEPRESSURIZED, HIGH SPEED, LOW TORQUE
 NORMALLY HIGH SPEED MOTOR:
 PORT D DEPRESSURIZED AND PORT C DEPRESSURIZED, HIGH SPEED, LOW TORQUE
 PORT D PRESSURIZED AND PORT C DEPRESSURIZED AT 6.9 bar (100 lbf/in²)
 MINIMUM PRESSURE DIFFERENCE, LOW SPEED HIGH TORQUE
 PORT C MUST BE DRAINED TO TANK EXTERNALLY FOR PROPER OPERATION

REVIEWED FOR CLASSIFICATION PER ESP-042

UNLESS OTHERWISE SPECIFIED ALL DIMENSIONS ARE IN INCHES		DRAWING BASED ON ANSI Y14.5M-1982	
MILLIMETERS <input type="checkbox"/>		THE REPRODUCTION, DISTRIBUTION, AND UTILIZATION OF THIS DOCUMENT, AS WELL AS THE COMMUNICATION OF ITS CONTENTS TO OTHERS WITHOUT EXPRESS AUTHORIZATION IS PROHIBITED. OFFENDERS WILL BE HELD LIABLE FOR THE PAYMENT OF DAMAGES. ALL RIGHTS RESERVED IN THE EVENT OF THE GRANT OF A PATENT, UTILITY MODEL, OR DESIGN. (PER ISO 10010)	
TOLERANCES		DRAWN BY/DATE: 8-12-93	MATERIAL/HEAT TREAT: -
X * REF		CHECKED BY/DATE: 2-14-94	TITLE: 2000 SERIES -TWO SPEED MOTOR PORT INSTALLATION
XXX * ONLY		ENGINEER BY/DATE: 2-16-94	NUMBER: A-673-014
UNSPECIFIED HATCH ANG.		RETAINER BY/DATE:	SCALE: 1/1
UNSPECIFIED DRAFT ANGLES ARE:		THIRD ANGLE PROJECTION	SHEET 1 OF 1
D SIZE		DO NOT SCALE	