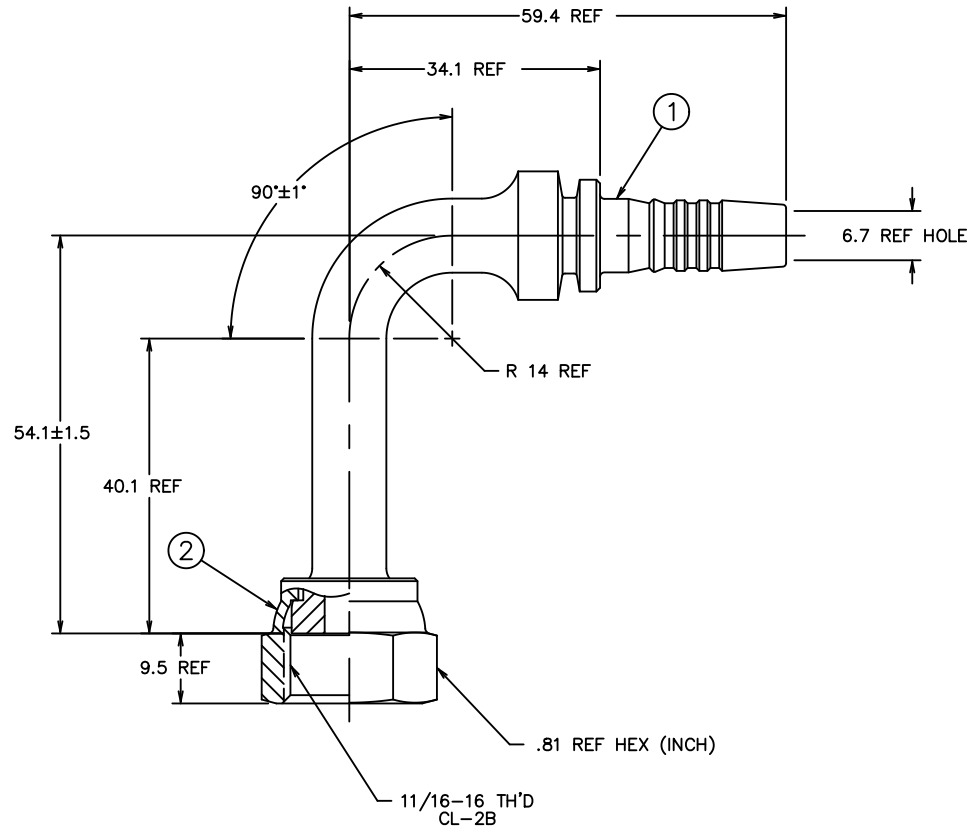


REVISIONS			
REV	DESCRIPTION	DATE	APPROVED
J	REDRAWN & REDESIGNED - LAST REV "H" (WAS BRAZE DESIGN)	7-22-96	EN-F16576 DP-1141
K	1) FINISH WAS "ZINC PLATE PER ACES 2751".	2020-07-03 ASB	CO-0205425



59.4	2.34
54.1±1.5	2.13±.06
40.1	1.58
34.1	1.34
14	.55
9.5	.37
6.7	.26
MM	INCH

CONVERSION

METRIC

1. PROCESS AS FOLLOWS:
 (a) BEND NIPPLE TO DIMENSIONS SHOWN.
 (b) ZINC PLATE PER ES 2751DB.
 (c) CRIMP NUT PER ACES 2409P1.

(K)

1SA6FRC6	1F40056-0606AB	FC1473-06S		
AEROQUIP PART NUMBER	① NIPPLE	② NUT		
LIST OF MATERIALS				
ITEM NO.	MATERIAL	DRAWN KARIE KUTZLY CHECKED R.D. GARRETT APPROVED R.D. GARRETT RELEASE DATE 1996-07-22 EN-F16576 DP-1141		
1	STEEL	FLUID CONVEYANCE DIVISION DRAWING TITLE NIPPLE ASSEMBLY 90°, ORS FEMALE SWIVEL, 2781 HOSE SIZE A3 DRAWING NUMBER 1SA6FRC6 REV K SCALE 2/1 DIST U CAGE CODE 01276 SHEET		
2	STEEL			
THIRD ANGLE PROJECTION		THE REPRODUCTION, DISTRIBUTION AND UTILIZATION OF THIS DOCUMENT AS WELL AS THE COMMUNICATION OF ITS CONTENTS TO OTHERS WITHOUT EXPLICIT AUTHORIZATION IS PROHIBITED. OFFENDERS WILL BE HELD LIABLE FOR THE PAYMENT OF DAMAGES. ALL RIGHT RESERVED IN THE EVENT OF THE GRANT OF A PATENT, UTILITY MODEL OR DESIGN. (PER ISO 18016)		