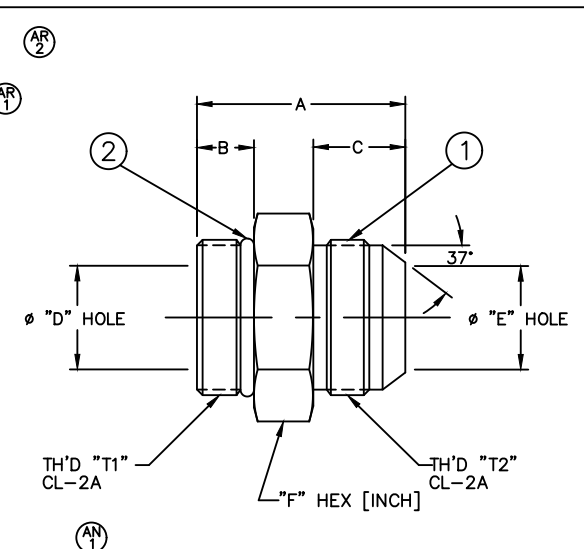


PART NUMBER	WEATHERHEAD PART NUMBER	TH'D "T1"	TH'D "T2"	A REF	B REF	C REF	D REF	E REF	F REF
202702-12-10S	C5315X10X12	1 1/16-12	7/8-14	47.2 [1.86]	15 [.59]	19.3 [.76]	15.5 [.61]	12.2 [.48]	1 1/4
202702-12-12S	C5315X12	1 1/16-12	1 1/16-12	50 [1.97]	15 [.59]	21.8 [.86]	15.5 [.61]	15.5 [.61]	1 1/4
202702-12-14S	C5315X14X12	1 1/16-12	1 3/16-12	50.5 [1.99]	15 [.59]	22.6 [.89]	15.5 [.61]	18.3 [.72]	1 1/4
202702-12-16S	C5315X16X12	1 1/16-12	1 5/16-12	51.8 [2.04]	15 [.59]	23.1 [.91]	15.5 [.61]	21.3 [.84]	1 3/8
202702-12-20S	C5315X20X12	1 1/16-12	1 5/8-12	58.4 [2.30]	15 [.59]	24.4 [.96]	15.5 [.61]	27.4 [1.08]	1 11/16
202702-14-10S	C5315X10X14	1 3/16-12	7/8-14	47.2 [1.86]	15 [.59]	19.3 [.76]	18.3 [.72]	12.2 [.48]	1 3/8
202702-14-12S	C5315X12X14	1 3/16-12	1 1/16-12	49.8 [1.96]	15 [.59]	21.8 [.86]	18.3 [.72]	15.5 [.61]	1 3/8
202702-14-14S	C5315X14	1 3/16-12	1 3/16-12	50.5 [1.99]	15 [.59]	22.6 [.89]	18.3 [.72]	18.3 [.72]	1 3/8
202702-14-16S	C5315X16X14	1 3/16-12	1 5/16-12	51.8 [2.04]	15 [.59]	23.1 [.91]	18.3 [.72]	21.3 [.84]	1 3/8
202702-16-8S	C5315X8X16	1 5/16-12	3/4-16	45.5 [1.79]	15 [.59]	16.8 [.66]	21.3 [.84]	9.9 [.39]	1 1/2
202702-16-10S	C5315X10X16	1 5/16-12	7/8-14	48 [1.89]	15 [.59]	19.3 [.76]	21.3 [.84]	12.2 [.48]	1 1/2
202702-16-12S	C5315X12X16	1 5/16-12	1 1/16-12	50.5 [1.99]	15 [.59]	21.8 [.86]	21.3 [.84]	15.5 [.61]	1 1/2
202702-16-16S	C5315X16	1 5/16-12	1 5/16-12	51.8 [2.04]	15 [.59]	23.1 [.91]	21.3 [.84]	21.3 [.84]	1 1/2
202702-16-20S	C5315X20X16	1 5/16-12	1 5/8-12	59.2 [2.33]	15 [.59]	24.4 [.96]	21.3 [.84]	27.4 [1.08]	1 11/16
202702-20-12S	C5315X12X20	1 5/8-12	1 1/16-12	52.8 [2.08]	15 [.59]	21.8 [.86]	27.4 [1.08]	15.5 [.61]	1 7/8
202702-20-16S	C5315X16X20	1 5/8-12	1 5/16-12	53.8 [2.12]	15 [.59]	23.1 [.91]	27.4 [1.08]	21.3 [.84]	1 7/8
202702-20-20S	C5315X20	1 5/8-12	1 5/8-12	55.1 [2.17]	15 [.59]	24.4 [.96]	27.4 [1.08]	27.4 [1.08]	1 7/8
202702-20-24S	C5315X24X20	1 5/8-12	1 7/8-12	64.3 [2.53]	15 [.59]	27.4 [1.08]	27.4 [1.08]	33.3 [1.31]	2
202702-24-16S	C5315X16X24	1 7/8-12	1 5/16-12	55.9 [2.20]	15 [.59]	23.1 [.91]	33.3 [1.31]	21.3 [.84]	2 1/8
202702-24-20S	C5315X20X24	1 7/8-12	1 5/8-12	56.9 [2.24]	15 [.59]	24.4 [.96]	33.3 [1.31]	27.4 [1.08]	2 1/8
202702-24-24S	C5315X24	1 7/8-12	1 7/8-12	60.2 [2.37]	15 [.59]	27.4 [1.08]	33.3 [1.31]	33.3 [1.31]	2 1/8
202702-24-32S	C5315X32X24	1 7/8-12	2 1/2-12	74.7 [2.94]	15 [.59]	33.8 [1.33]	33.3 [1.31]	45.2 [1.78]	2 5/8
202702-32-24S	C5315X24X32	2 1/2-12	1 7/8-12	64.3 [2.53]	15 [.59]	27.4 [1.08]	45.2 [1.78]	33.3 [1.31]	2 3/4
202702-32-32S	C5315X32	2 1/2-12	2 1/2-12	70.6 [2.78]	15 [.59]	33.8 [1.33]	45.2 [1.78]	45.2 [1.78]	2 3/4



REVISIONS			
REV	DESCRIPTION	DATE	APPROVED
AN	REDRAWN. UPDATED TO LATEST DANFOSS FORMAT. 1) ADDED PART # 202702-32-24S, 202702-24-32S & 202702-14-14S	2011-12-28 SBM/AGV	0065343-ECO DP-1299
AP	INACTIVATED "TAB 202702-12-10S"	2016-06-20 JEM/YKP	0070501
AR	1) REACTIVATED PART #202702-12-10S. 2) REMOVED TEXT "INACTIVE" FROM DRAWING.	2016-09-21 VSP	0127257-ECO

METRIC

202702-32-32S	C5315X32	202701-32-32S	22617-32	
202702-32-24S	C5315X24X32	202701-32-24S	22617-32	
202702-24-32S	C5315X32X24	202701-24-32S	22617-24	
202702-24-24S	C5315X24	202701-24-24S	22617-24	
202702-24-20S	C5315X20X24	202701-24-20S	22617-24	
202702-24-16S	C5315X16X24	202701-24-16S	22617-24	
202702-20-24S	C5315X24X20	202701-20-24S	22617-20	
202702-20-20S	C5315X20	202701-20-20S	22617-20	
202702-20-16S	C5315X16X20	202701-20-16S	22617-20	
202702-20-12S	C5315X12X20	202701-20-12S	22617-20	
202702-16-20S	C5315X20X16	202701-16-20S	22617-16	
202702-16-16S	C5315X16	202701-16-16S	22617-16	
202702-16-12S	C5315X12X16	202701-16-12S	22617-16	
202702-16-10S	C5315X10X16	202701-16-10S	22617-16	
202702-16-8S	C5315X8X16	202701-16-8S	22617-16	
202702-14-16S	C5315X16X14	202701-14-16S	22617-14	
202702-14-14S	C5315X14	202701-14-14S	22617-14	
202702-14-12S	C5315X12X14	202701-14-12S	22617-14	
202702-14-10S	C5315X10X14	202701-14-10S	22617-14	
202702-12-20S	C5315X20X12	202701-12-20S	22617-12	
202702-12-16S	C5315X16X12	202701-12-16S	22617-12	
202702-12-14S	C5315X14X12	202701-12-14S	22617-12	
202702-12-12S	C5315X12	202701-12-12S	22617-12	
202702-12-10S	C5315X10X12	202701-12-10S	22617-12	

PART NUMBER	WEATHERHEAD PART NUMBER	① ADAPTER	② O'RING
-------------	-------------------------	-----------	----------

LIST OF MATERIALS

ITEM NO.	MATERIAL	DRAWN S. MERWADE	CHECKED A. VARANKAR	APPROVED J. SNYDER	RELEASE DATE 2011-12-28	0065343-ECO	DP-1299	THIRD ANGLE PROJECTION	SCALE	DIST	U	CAGE CODE	01276	SHEET	2
1	STEEL	FLUID CONVEYANCE DIVISION DRAWING TITLE ADAPTER SAE 37° FLARE-THREAD CONNECTOR SHORT (SAE #070120)													
2	NITRILE(BUNA-N)	SIZE DRAWING NUMBER 202702 REV AR													

1. DIMENSIONS ARE IN MILLIMETERS [INCHES].

THE REPRODUCTION, DISTRIBUTION AND UTILIZATION OF THIS DOCUMENT AS WELL AS THE COMMUNICATION OF ITS CONTENTS TO OTHERS WITHOUT EXPLICIT AUTHORIZATION IS PROHIBITED. OFFENDERS WILL BE HELD LIABLE FOR THE PAYMENT OF DAMAGES. ALL RIGHT RESERVED IN THE EVENT OF THE GRANT OF A PATENT, UTILITY MODEL OR DESIGN. (PER ISO 16016)