

DISPLACEMENT	DISPLACEMENT FRONT																				
	5.1 cm3/r [1.51 in3/r]	6.6 cm3/r [1.40 in3/r]	8.2 cm3/r [1.58 in3/r]	9.8 cm3/r [1.58 in3/r]	11.4 cm3/r [1.58 in3/r]	13.0 cm3/r [1.72 in3/r]	14.6 cm3/r [1.86 in3/r]	16.2 cm3/r [1.99 in3/r]	17.8 cm3/r [2.13 in3/r]	19.4 cm3/r [2.27 in3/r]	21.0 cm3/r [2.41 in3/r]	22.6 cm3/r [2.55 in3/r]	24.2 cm3/r [2.69 in3/r]	25.8 cm3/r [2.83 in3/r]	27.4 cm3/r [2.97 in3/r]	29.0 cm3/r [3.11 in3/r]	30.6 cm3/r [3.25 in3/r]	32.2 cm3/r [3.39 in3/r]	33.8 cm3/r [3.53 in3/r]		
5.1 cm3/r [1.51 in3/r]	DIM A	131.9(5.19)	133.5(5.26)	135.1(5.33)	136.7(5.39)	138.3(5.46)	139.9(5.53)	141.5(5.59)	143.1(5.66)	144.7(5.72)	146.3(5.78)	147.9(5.85)	149.5(5.91)	151.1(5.98)	152.7(6.04)	154.3(6.11)	155.9(6.17)	157.5(6.24)	159.1(6.30)	160.7(6.37)	
6.6 cm3/r [1.40 in3/r]	DIM A	131.9(5.19)	133.5(5.26)	135.1(5.33)	136.7(5.39)	138.3(5.46)	139.9(5.53)	141.5(5.59)	143.1(5.66)	144.7(5.72)	146.3(5.78)	147.9(5.85)	149.5(5.91)	151.1(5.98)	152.7(6.04)	154.3(6.11)	155.9(6.17)	157.5(6.24)	159.1(6.30)	160.7(6.37)	162.3(6.44)
8.2 cm3/r [1.58 in3/r]	DIM A	131.9(5.19)	133.5(5.26)	135.1(5.33)	136.7(5.39)	138.3(5.46)	139.9(5.53)	141.5(5.59)	143.1(5.66)	144.7(5.72)	146.3(5.78)	147.9(5.85)	149.5(5.91)	151.1(5.98)	152.7(6.04)	154.3(6.11)	155.9(6.17)	157.5(6.24)	159.1(6.30)	160.7(6.37)	162.3(6.44)
9.8 cm3/r [1.58 in3/r]	DIM A	131.9(5.19)	133.5(5.26)	135.1(5.33)	136.7(5.39)	138.3(5.46)	139.9(5.53)	141.5(5.59)	143.1(5.66)	144.7(5.72)	146.3(5.78)	147.9(5.85)	149.5(5.91)	151.1(5.98)	152.7(6.04)	154.3(6.11)	155.9(6.17)	157.5(6.24)	159.1(6.30)	160.7(6.37)	162.3(6.44)
11.4 cm3/r [1.72 in3/r]	DIM A	131.9(5.19)	133.5(5.26)	135.1(5.33)	136.7(5.39)	138.3(5.46)	139.9(5.53)	141.5(5.59)	143.1(5.66)	144.7(5.72)	146.3(5.78)	147.9(5.85)	149.5(5.91)	151.1(5.98)	152.7(6.04)	154.3(6.11)	155.9(6.17)	157.5(6.24)	159.1(6.30)	160.7(6.37)	162.3(6.44)
13.0 cm3/r [1.86 in3/r]	DIM A	131.9(5.19)	133.5(5.26)	135.1(5.33)	136.7(5.39)	138.3(5.46)	139.9(5.53)	141.5(5.59)	143.1(5.66)	144.7(5.72)	146.3(5.78)	147.9(5.85)	149.5(5.91)	151.1(5.98)	152.7(6.04)	154.3(6.11)	155.9(6.17)	157.5(6.24)	159.1(6.30)	160.7(6.37)	162.3(6.44)
14.6 cm3/r [1.99 in3/r]	DIM A	131.9(5.19)	133.5(5.26)	135.1(5.33)	136.7(5.39)	138.3(5.46)	139.9(5.53)	141.5(5.59)	143.1(5.66)	144.7(5.72)	146.3(5.78)	147.9(5.85)	149.5(5.91)	151.1(5.98)	152.7(6.04)	154.3(6.11)	155.9(6.17)	157.5(6.24)	159.1(6.30)	160.7(6.37)	162.3(6.44)
16.2 cm3/r [2.13 in3/r]	DIM A	131.9(5.19)	133.5(5.26)	135.1(5.33)	136.7(5.39)	138.3(5.46)	139.9(5.53)	141.5(5.59)	143.1(5.66)	144.7(5.72)	146.3(5.78)	147.9(5.85)	149.5(5.91)	151.1(5.98)	152.7(6.04)	154.3(6.11)	155.9(6.17)	157.5(6.24)	159.1(6.30)	160.7(6.37)	162.3(6.44)
17.8 cm3/r [2.27 in3/r]	DIM A	131.9(5.19)	133.5(5.26)	135.1(5.33)	136.7(5.39)	138.3(5.46)	139.9(5.53)	141.5(5.59)	143.1(5.66)	144.7(5.72)	146.3(5.78)	147.9(5.85)	149.5(5.91)	151.1(5.98)	152.7(6.04)	154.3(6.11)	155.9(6.17)	157.5(6.24)	159.1(6.30)	160.7(6.37)	162.3(6.44)
19.4 cm3/r [2.41 in3/r]	DIM A	131.9(5.19)	133.5(5.26)	135.1(5.33)	136.7(5.39)	138.3(5.46)	139.9(5.53)	141.5(5.59)	143.1(5.66)	144.7(5.72)	146.3(5.78)	147.9(5.85)	149.5(5.91)	151.1(5.98)	152.7(6.04)	154.3(6.11)	155.9(6.17)	157.5(6.24)	159.1(6.30)	160.7(6.37)	162.3(6.44)
21.0 cm3/r [2.55 in3/r]	DIM A	131.9(5.19)	133.5(5.26)	135.1(5.33)	136.7(5.39)	138.3(5.46)	139.9(5.53)	141.5(5.59)	143.1(5.66)	144.7(5.72)	146.3(5.78)	147.9(5.85)	149.5(5.91)	151.1(5.98)	152.7(6.04)	154.3(6.11)	155.9(6.17)	157.5(6.24)	159.1(6.30)	160.7(6.37)	162.3(6.44)
22.6 cm3/r [2.69 in3/r]	DIM A	131.9(5.19)	133.5(5.26)	135.1(5.33)	136.7(5.39)	138.3(5.46)	139.9(5.53)	141.5(5.59)	143.1(5.66)	144.7(5.72)	146.3(5.78)	147.9(5.85)	149.5(5.91)	151.1(5.98)	152.7(6.04)	154.3(6.11)	155.9(6.17)	157.5(6.24)	159.1(6.30)	160.7(6.37)	162.3(6.44)
24.2 cm3/r [2.83 in3/r]	DIM A	131.9(5.19)	133.5(5.26)	135.1(5.33)	136.7(5.39)	138.3(5.46)	139.9(5.53)	141.5(5.59)	143.1(5.66)	144.7(5.72)	146.3(5.78)	147.9(5.85)	149.5(5.91)	151.1(5.98)	152.7(6.04)	154.3(6.11)	155.9(6.17)	157.5(6.24)	159.1(6.30)	160.7(6.37)	162.3(6.44)
25.8 cm3/r [2.97 in3/r]	DIM A	131.9(5.19)	133.5(5.26)	135.1(5.33)	136.7(5.39)	138.3(5.46)	139.9(5.53)	141.5(5.59)	143.1(5.66)	144.7(5.72)	146.3(5.78)	147.9(5.85)	149.5(5.91)	151.1(5.98)	152.7(6.04)	154.3(6.11)	155.9(6.17)	157.5(6.24)	159.1(6.30)	160.7(6.37)	162.3(6.44)
27.4 cm3/r [3.11 in3/r]	DIM A	131.9(5.19)	133.5(5.26)	135.1(5.33)	136.7(5.39)	138.3(5.46)	139.9(5.53)	141.5(5.59)	143.1(5.66)	144.7(5.72)	146.3(5.78)	147.9(5.85)	149.5(5.91)	151.1(5.98)	152.7(6.04)	154.3(6.11)	155.9(6.17)	157.5(6.24)	159.1(6.30)	160.7(6.37)	162.3(6.44)
29.0 cm3/r [3.25 in3/r]	DIM A	131.9(5.19)	133.5(5.26)	135.1(5.33)	136.7(5.39)	138.3(5.46)	139.9(5.53)	141.5(5.59)	143.1(5.66)	144.7(5.72)	146.3(5.78)	147.9(5.85)	149.5(5.91)	151.1(5.98)	152.7(6.04)	154.3(6.11)	155.9(6.17)	157.5(6.24)	159.1(6.30)	160.7(6.37)	162.3(6.44)
30.6 cm3/r [3.39 in3/r]	DIM A	131.9(5.19)	133.5(5.26)	135.1(5.33)	136.7(5.39)	138.3(5.46)	139.9(5.53)	141.5(5.59)	143.1(5.66)	144.7(5.72)	146.3(5.78)	147.9(5.85)	149.5(5.91)	151.1(5.98)	152.7(6.04)	154.3(6.11)	155.9(6.17)	157.5(6.24)	159.1(6.30)	160.7(6.37)	162.3(6.44)
32.2 cm3/r [3.53 in3/r]	DIM A	131.9(5.19)	133.5(5.26)	135.1(5.33)	136.7(5.39)	138.3(5.46)	139.9(5.53)	141.5(5.59)	143.1(5.66)	144.7(5.72)	146.3(5.78)	147.9(5.85)	149.5(5.91)	151.1(5.98)	152.7(6.04)	154.3(6.11)	155.9(6.17)	157.5(6.24)	159.1(6.30)	160.7(6.37)	162.3(6.44)
33.8 cm3/r [3.67 in3/r]	DIM A	131.9(5.19)	133.5(5.26)	135.1(5.33)	136.7(5.39)	138.3(5.46)	139.9(5.53)	141.5(5.59)	143.1(5.66)	144.7(5.72)	146.3(5.78)	147.9(5.85)	149.5(5.91)	151.1(5.98)	152.7(6.04)	154.3(6.11)	155.9(6.17)	157.5(6.24)	159.1(6.30)	160.7(6.37)	162.3(6.44)

REV	DESCRIPTION	BY	CHK	DATE	ECN
H	SEE SHEET I FOR REVISION				

DRAWING BASED ON ANSI Y14.5M-1982

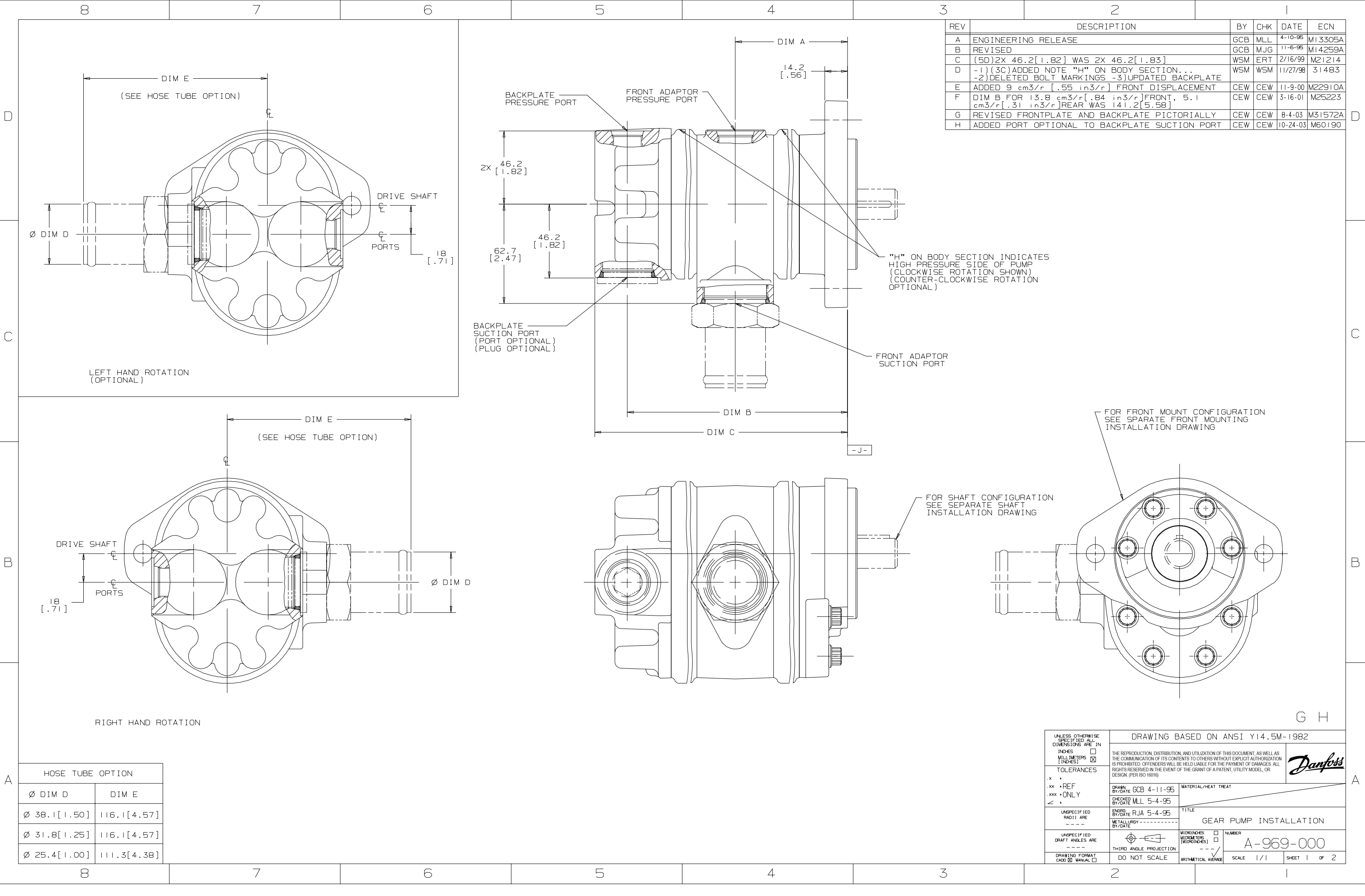
UNLESS OTHERWISE SPECIFIED, ALL DIMENSIONS ARE TO BE TAKEN TO THE CENTER OF THE HOLE UNLESS OTHERWISE SPECIFIED. DIMENSIONS TO THE CENTER OF THE HOLE UNLESS OTHERWISE SPECIFIED.

TOLERANCES

FINISH: GCS 4-11-95 MATERIAL: TITANIUM

GEAR PUMP INSTALLATION

SCALE: 1/1 SHEET 2 OF 2



REV	DESCRIPTION	BY	CHK	DATE	ECN
A	ENGINEERING RELEASE	GCB	M.L.	11-10-96	M13306A
B	REVISED	GCB	M.J.G.	11-14-96	M14253A
D	[1.50] TO [1.62] WAS 2X .46 [2] TO [1.63]	WSM	WSM	11/27/98	M21214
E	ADDED NOTE "H" ON BODY SECTION	WSM	WSM	11/27/98	S1483
F	DELETED BOLT MARKINGS - SUPPLIERS BACKPLATE	CEW	CEW	11-9-00	M22910A
G	ADDED 9 CM3/R [1.58 IN3/R] FRONT DISPLACEMENT	CEW	CEW	5-16-01	M25223
H	REVISED FRONT AND BACKPLATE PRIORITARIALLY	CEW	CEW	8-03-01	M31572A
I	ADDED PORT OPTIONAL TO BACKPLATE SUCTION PORT	CEW	CEW	10-24-03	M60190

DRAWING BASED ON ANSI Y14.5M-1982

UNLESS OTHERWISE SPECIFIED, ALL DIMENSIONS ARE TO BE TAKEN TO THE CENTER OF THE HOLE UNLESS OTHERWISE SPECIFIED. DIMENSIONS TO THE CENTER OF THE HOLE UNLESS OTHERWISE SPECIFIED.

TOLERANCES

FINISH: GCS 4-11-95 MATERIAL: TITANIUM

GEAR PUMP INSTALLATION

SCALE: 1/1 SHEET 1 OF 2