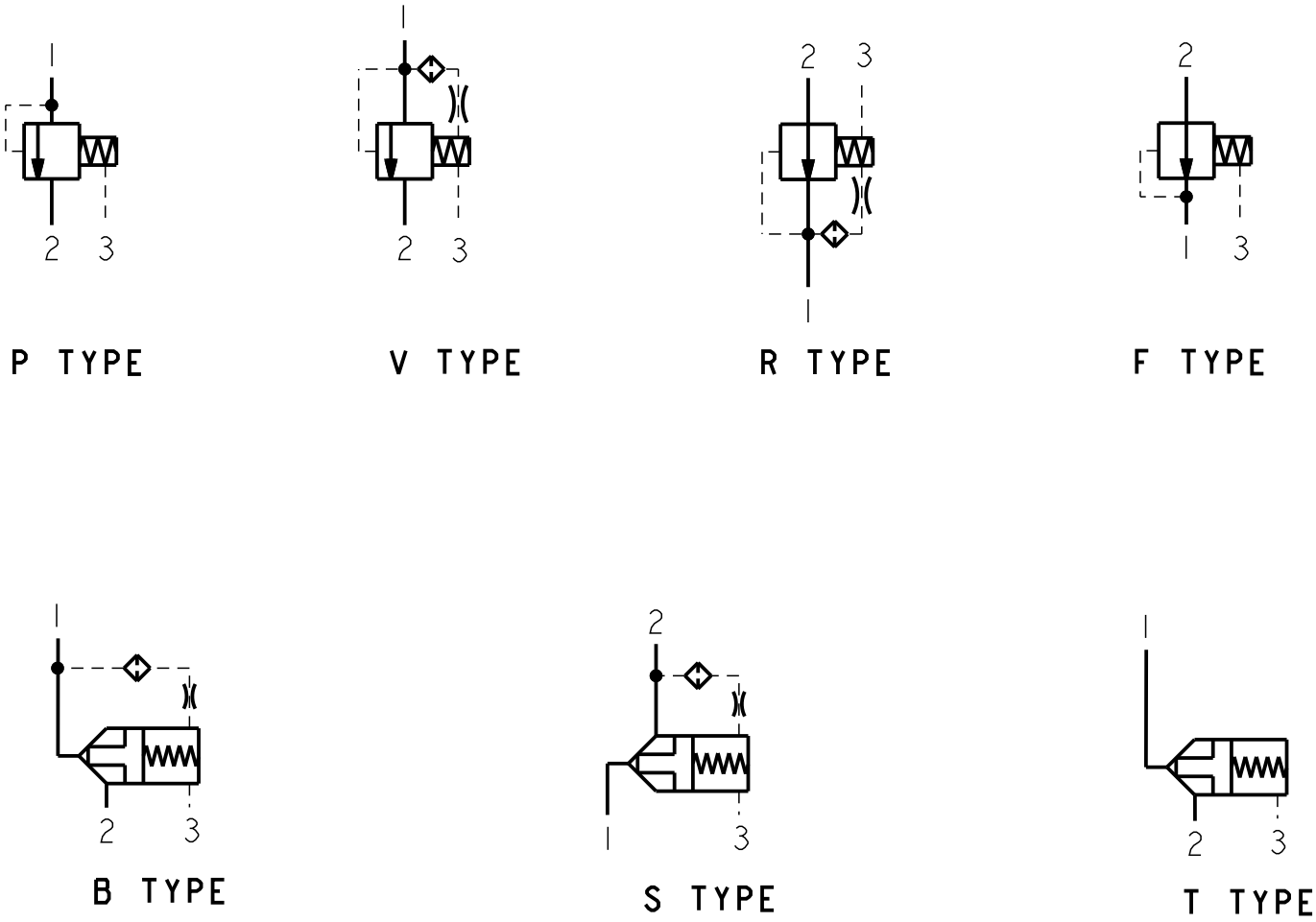

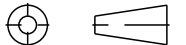


REV	DESCRIPTION	BY	CHK	DATE	ECN / MPS
A	ENGINEERING RELEASE	LMD	LMD	2-12-05	M63978
B	CORRECTED DIMENSIONS	YKP	LIK	03/13/13	M87846
C	DIMENSION ADDED FOR 3500 PSI AND 4200 PSI VALVE	MBK	YKP	10/06/14	M94188



- NOTE
- USE VALVE CAVITY C-20-3S
  - TORQUE INTO CAVITY: ALUMINUM 128-155 N\*m [95-115 lbf·ft]  
STEEL 163-183 N\*m [120-135 lbf·ft]
  - NET WEIGHT: .81 kg [1.78 lbs]

UNLESS OTHERWISE SPECIFIED ALL DIMENSIONS ARE IN  INCHES <input type="checkbox"/> MILLIMETERS (INCHES) <input checked="" type="checkbox"/>  TOLERANCES  .X ± .XX ± .XXX ± ∠ ±  UNSPECIFIED RADII ARE:  -----  UNSPECIFIED DRAFT ANGLES ARE:  -----°  C SIZE	DRAWING BASED ON ANSI Y14.5M-1994		
	THE REPRODUCTION, DISTRIBUTION, AND UTILIZATION OF THIS DOCUMENT, AS WELL AS THE COMMUNICATION OF ITS CONTENTS TO OTHERS WITHOUT EXPLICIT AUTHORIZATION IS PROHIBITED. OFFENDERS WILL BE HELD LIABLE FOR THE PAYMENT OF DAMAGES. ALL RIGHTS RESERVED IN THE EVENT OF THE GRANT OF A PATENT, UTILITY MODEL, OR DESIGN. (PER ISO 16016)		
DRAWN LMD BY/DATE 3-18-05		MATERIAL/HEAT TREAT	
CHECKED LD BY/DATE 3-18-05			
ENGRG AH BY/DATE 11-16-05		TITLE	
METALLURGY BY/DATE		DIFFERENTIAL PRESSURE SENSING VALVE	
 THIRD ANGLE PROJECTION		<input type="checkbox"/> MICROINCHES MICROMETERS (MICROINCHES) <input checked="" type="checkbox"/>  ✓ ARITHMETICAL AVERAGE	NUMBER  A-2658-005
DO NOT SCALE		SCALE 2/1	SHEET 1 OF 1