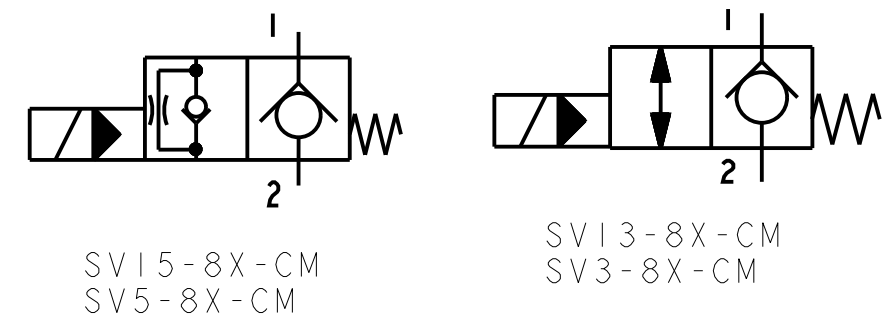


REV	DESCRIPTION	BY	CHK	DATE	ECN / MPS
A	ENGINEERING RELEASE	JGS	AH	2/12/05	M63978
B	ADDED SYMBOL FOR SV13-8X-CM	YKP	IKK	11/0/11	M80145B
C	ADDED SV5-8X-CM	YKP	VKN	07/12/15	0073577
D	ADDED SV3-8X-CM	YKP	VKN	10/08/13	M90483
E	REVISED SEE ECO	MBK	VKN	10/15/15	0115646



NOTE:

- USE VALVE CAVITY C-8-2
- NET WEIGHT:
 CARTRIDGE ONLY: .09kg [.21 lb]
 CARTRIDGE W/COIL: .27 kg [.60 lb]
 CARTRIDGE W/COIL AND ALUMINUM BODY: .54 kg [1.2 lb]
- TORQUE INTO CAVITY 34-41 N.m [25-30 lbf.ft]

REVIEWED FOR CLASSIFICATION PER ESP-042

UNLESS OTHERWISE SPECIFIED ALL DIMENSIONS ARE IN INCHES <input type="checkbox"/> MILLIMETERS (INCHES) <input checked="" type="checkbox"/>	DRAWING BASED ON ASME Y14.5-2009	
	THE REPRODUCTION, DISTRIBUTION, AND UTILIZATION OF THIS DOCUMENT, AS WELL AS THE COMMUNICATION OF ITS CONTENTS TO OTHERS WITHOUT EXPLICIT AUTHORIZATION IS PROHIBITED. OFFENDERS WILL BE HELD LIABLE FOR THE PAYMENT OF DAMAGES. ALL RIGHTS RESERVED IN THE EVENT OF THE GRANT OF A PATENT, UTILITY MODEL, OR DESIGN. (PER ISO 16016)	
TOLERANCES .X ± .XX ± .XXX ± < ±	DRAWN JGS BY/DATE 6/9/03 CHECKED LMD BY/DATE 8/4/03	MATERIAL/HEAT TREAT \
UNSPECIFIED RADII ARE: ----	ENGRG \ BY/DATE \	TITLE SOLENOID VALVE INSTALLATION
UNSPECIFIED DRAFT ANGLES ARE: ----°	METALLURGY \ BY/DATE \	NUMBER A-2416-054
B SIZE	THIRD ANGLE PROJECTION DO NOT SCALE	SCALE 1/1 SHEET 1 OF 1

