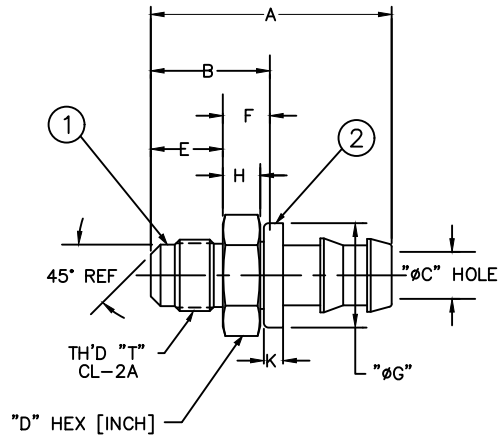


WEATHERHEAD PART NUMBER	AEROQUIP PART NUMBER	TH'D T"	A REF	B REF	C REF	D (INCH) REF	E REF	F REF	G ±0.25 [±.010]	H REF	K REF
10004B-304	4742-4B	7/16-20	40.9 [1.61]	21.8 [.86]	4.3 [.17]	7/16	12.7 [.50]	9.1 [.36]	17.5 [.689]	6.4 [.25]	4.3 [.17]
10004B-305	4742-5-4B	1/2-20	42.4 [1.67]	23.4 [.92]	4.3 [.17]	1/2	14.2 [.56]	9.1 [.36]	17.5 [.689]	6.4 [.25]	4.3 [.17]
10005B-305	4742-5B	1/2-20	43.7 [1.72]	23.1 [.91]	6.1 [.24]	1/2	14.2 [.56]	8.9 [.35]	18.5 [.730]	6.1 [.24]	4.3 [.17]
10006B-306	4742-6B	5/8-18	46.7 [1.84]	24.9 [.98]	7.1 [.28]	5/8	15.7 [.62]	9.1 [.36]	22 [.866]	6.4 [.25]	4.3 [.17]
10008B-308	4742-8B	3/4-16	53.8 [2.12]	28.2 [1.11]	9.9 [.39]	13/16	19 [.75]	9.1 [.36]	24.9 [.980]	6.4 [.25]	4.3 [.17]

REVISIONS			
REV	DESCRIPTION	DATE	APPROVED
D	REDRAWN AND REDESIGNED UPDATED TO LATEST DANFOSS FORMAT & DIMENSION STYLE. 1) ADDED WEATHERHEAD PART NUMBERS. 2) ADDED PART #4742-5B.	2014-06-19 KRC/VSP	0098580- ECO

①

②



METRIC

③

④

10008B-308	4742-8B	FW1926-0808B	FF91126-8		
10006B-306	4742-6B	FW1926-0606B	FF91126-6		
10005B-305	4742-5B	FW1926-0505B	FF91126-5		
10004B-305	4742-5-4B	FW1926-0504B	FF91126-4		
10004B-304	4742-4B	FW1926-0404B	FF91126-4		
WEATHERHEAD PART NUMBER	AEROQUIP PART NUMBER	① NIPPLE	② HOSE CAP		

LIST OF MATERIALS

ITEM NO.	MATERIAL	DRAWN K. CHAVAN	CHECKED V. PATIL	APPROVED Y. KULKARNI	RELEASE DATE 2014-06-19	0098580-ECO	FLUID CONVEYANCE DIVISION
1	BRASS						DRAWING TITLE FITTING ASSEMBLY SAE 45° MALE FLARE, SOCKETLESS TYPE, 2556 HOSE
2	SANTOPRENE-BLUE						
		THIRD ANGLE PROJECTION	SIZE A2	DRAWING NUMBER 4742-B	REV D		
		SCALE NONE	DIST U	CAGE CODE 01276	SHEET 1		

1. DIMENSIONS ARE IN MILLIMETERS [INCHES].

THE REPRODUCTION, DISTRIBUTION AND UTILIZATION OF THIS DOCUMENT AS WELL AS THE COMMUNICATION OF ITS CONTENTS TO OTHERS WITHOUT EXPLICIT AUTHORIZATION IS PROHIBITED. OFFENDERS WILL BE HELD LIABLE FOR THE PAYMENT OF DAMAGES. ALL RIGHT RESERVED IN THE EVENT OF THE GRANT OF A PATENT, UTILITY MODEL OR DESIGN. (PER ISO 16016)