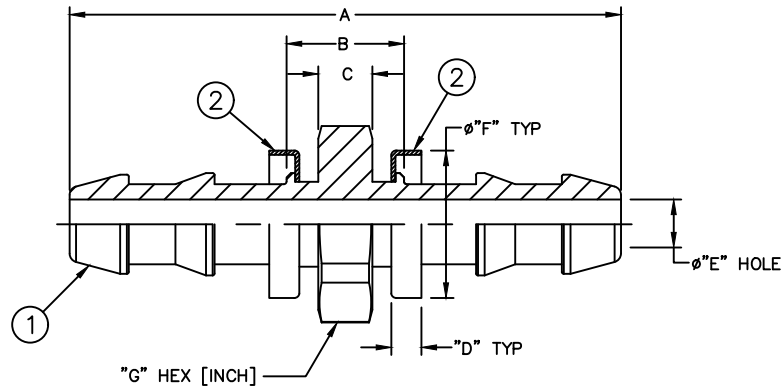


AEROQUIP PART NUMBER	WEATHERHEAD PART NUMBER	A REF	B REF	C REF	D REF	E REF	F ±0.25 [±.010]	G REF (INCH)
4772-4B	10004B-Y04	48.5 [1.91]	10.4 [.41]	4.8 [.19]	4.3 [.17]	4.3 [.17]	17.5 [.689]	5/8
4772-5B	10005B-Y05	52.8 [2.08]	11.7 [.46]	6.1 [.24]	4.3 [.17]	6.1 [.24]	18.5 [.730]	9/16
4772-6B	10006B-Y06	54.4 [2.14]	10.4 [.41]	4.8 [.19]	4.3 [.17]	7.6 [.30]	22 [.866]	3/4
4772-8B	10008B-Y08	63.5 [2.50]	11.9 [.47]	6.4 [.25]	4.3 [.17]	9.9 [.39]	24.9 [.980]	15/16
4772-10B	10010B-Y10	91.7 [3.61]	13.5 [.53]	7.9 [.31]	4.3 [.17]	12.2 [.48]	29.4 [1.156]	1 1/8
4772-12B	10012B-Y12	92.2 [3.63]	15.2 [.60]	9.6 [.38]	4.3 [.17]	15.5 [.61]	32.6 [1.283]	1 1/4

REVISIONS			
REV	DESCRIPTION	DATE	APPROVED
G	REDRAWN & REDESIGNED. UPDATED TO DANFOSS FORMAT & DIMENSION STYLE. 1) ADDED WEATHERHEAD PART NUMBERS.	2014-06-11 ARP/VSP	0098191-ECO
H	1) REMOVED NOTE #2.	2014-06-27 YFK	0099206-ECO

①



①

10012B-Y12	4772-12B	FW1923-1212B	FF91126-12		
10010B-Y10	4772-10B	FW1923-1010B	FF91126-10		
10008B-Y08	4772-8B	FW1923-0808B	FF91126-8		
10006B-Y06	4772-6B	FW1923-0606B	FF91126-6		
10005B-Y05	4772-5B	FW1923-0505B	FF91126-5		
10004B-Y04	4772-4B	FW1923-0404B	FF91126-4		
WEATHERHEAD PART NUMBER	AEROQUIP PART NUMBER	① NIPPLE	② HOSE CAP (2 QTY.)		

LIST OF MATERIALS

ITEM NO.	MATERIAL	DRAWN A. PATIL	CHECKED V. PATIL	APPROVED Y. KULKARNI	RELEASE DATE 2014-06-11	0098191-ECO	FLUID CONVEYANCE DIVISION			
1	BRASS						DRAWING TITLE			
2	SANTOPRENE-BLUE						FITTING ASSEMBLY DOGLEG, SOCKETLESS TYPE 2556 HOSE			
		SIZE A2	DRAWING NUMBER 4772-B		REV H					
THIRD ANGLE PROJECTION		SCALE NONE	DIST U	CAGE CODE 01276	SHEET 1					
<small>THE REPRODUCTION, DISTRIBUTION AND UTILIZATION OF THIS DOCUMENT AS WELL AS THE COMMUNICATION OF ITS CONTENTS TO OTHERS WITHOUT EXPLICIT AUTHORIZATION IS PROHIBITED. OFFENDERS WILL BE HELD LIABLE FOR THE PAYMENT OF DAMAGES. ALL RIGHT RESERVED IN THE EVENT OF THE GRANT OF A PATENT, UTILITY MODEL OR DESIGN. (PER ISO 16016)</small>										

METRIC

2. ①

1. DIMENSIONS ARE IN MILLIMETERS [INCHES].