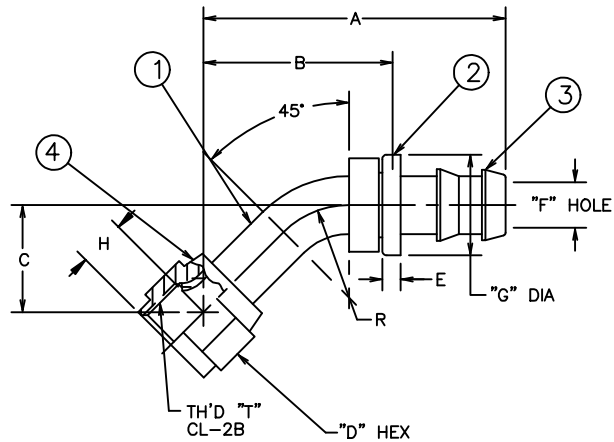


PART NUMBER	TH'D T <sub>H</sub>	A ±.062	B REF	C ±.062	D REF	E REF	F REF	G ±.010	H REF	R REF	PROCESS AS FOLLOWS
FC5849-0404S	7/16-20	1.560	.81	.326	.56	.16	.15	.615	.40	.38	1
FC5849-0808S	3/4-16	2.297	1.28	.547	.88	.16	.37	.870	.50	.75	3

REVISIONS			
REV.	DESCRIPTION	DATE	APPROVED
E	REDRAWN ON CAD - LAST REV. "D" (1) .15 WAS .17 & .37 WAS .39 (2) NOTE #1(b) & 3(b) WERE: "CADMIUM PLATE PER ACES 16P6"	3-20-92	EN-F12791 ER-F12791
F	(1) ADDED NOTE #4	9-22-92 P.T.R.	EN-F13373 DAI-23967
G	UPDATED AND REBRANDED TO DANFOSS FORMAT	2023-07-27 DMK	CO-0230576



4. CAN BE MADE FROM TUBING PER SPECIFICATIONS ON ELBOW DRAWING. (F1)

3. PROCESS AS FOLLOWS: (E2)  
 (a) BRAZE PER ACES 67P2, P3 OR P26.  
 (b) ZINC PLATE PER ACES 16P47.  
 (c) ASSEMBLE NUT AND FLARE PER FF481.  
 (d) ASSEMBLE CAP.

2. FOR OTHER SIZES IN SAE 45°, SEE FC5848-S.  
 FOR OTHER SIZES IN SAE 37°, SEE FC5847-S.

1. PROCESS AS FOLLOWS: (E2)  
 (a) BRAZE PER ACES 67P3 OR P26.  
 (b) ZINC PLATE PER ACES 16P47.  
 (c) ASSEMBLE NUT AND FLARE PER FF481.  
 (d) ASSEMBLE CAP.

FC5849-0808S	404501-8S	4213-1-8B	4131-8S	210221-8S	
FC5849-0404S	404501-4S	4213-1-4B	4131-4S	210221-4S	
PART NUMBER	(1) ELBOW (A)	(2) HOSE CAP	(3) NIPPLE	(4) NUT	

LIST OF MATERIALS

ITEM NO.	MATERIAL	FLUID CONVEYANCE DIVISION MAUMEE, OHIO U.S.A.		DRAWN TERRY BAKER
1	STEEL	CHECKED		R. D. GARRETT
2	BRASS	APPROVED		R. D. GARRETT
3	STEEL	RELEASE DATE		1992-03-25
4	STEEL	DRAWING INTERPRETATION PER ES 10		
		DRAWING TITLE		FITTING ASSEMBLY
		CAGE CODE		01278
		THIRD ANGLE PROJECTION		U
		SIZE		A2
		SCALE		NONE
		SHEET		1
		DRAWING NUMBER		FC5849-S
		REV		G

THE REPRODUCTION, DISTRIBUTION, AND UTILIZATION OF THIS DOCUMENT AS WELL AS THE COMMUNICATION OF ITS CONTENTS TO OTHERS WITHOUT EXPLICIT AUTHORIZATION IS PROHIBITED. OFFENDERS WILL BE HELD LIABLE FOR THE PAYMENT OF DAMAGES. ALL RIGHTS RESERVED IN THE EVENT OF THE GRANT OF A PATENT, UTILITY MODEL OR DESIGN. (PER ISO 16018)