

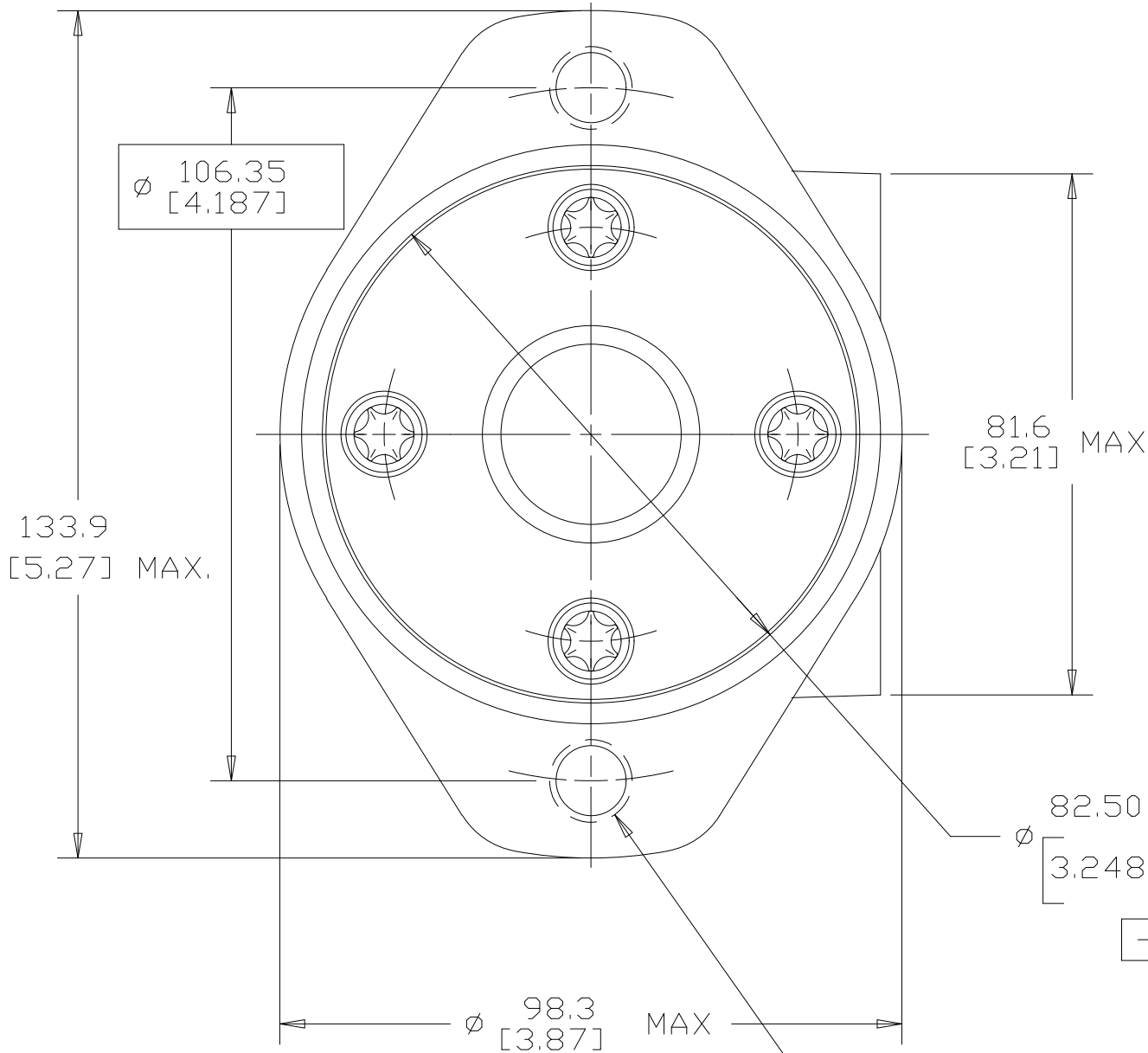
DISPLACEMENT CODE	G MAX
022	132.7 [5.22]
025	133.5 [5.26]
028	132.7 [5.22]
035	136.5 [5.37]
045	136.5 [5.37]
059	139.5 [5.49]
073	142.8 [5.62]
089	146.4 [5.76]
097	148.2 [5.84]
113	151.7 [5.97]
141	158.1 [6.22]
179	166.7 [6.56]
226	177.1 [6.97]
451	228.0 [8.98]

REV	DESCRIPTION	BY	CHK	DATE	ECN
A	ENGINEERING RELEASE	GCB		10-11-96	M16205
B	-1><4C>WAS 131.4/[5.17] MAX -2><4B>WAS 96.8/[3.81] MAX	SJP		04-07-04	46856
C	-1>REVISED PICTORIALY -2><4D>UPDATED TABULATION FOR G MAX -3>REVISED NOTE AS PER ESP-022-69	AAB		02-17-14	0054755
D	<1C>ADDED EATON LOGO TO END CAP	AAB		01-22-15	0061684
E	NOTE 3 WAS CASE DRAIN: 0 = NO CASE...	ABH		07-27-15	0065202

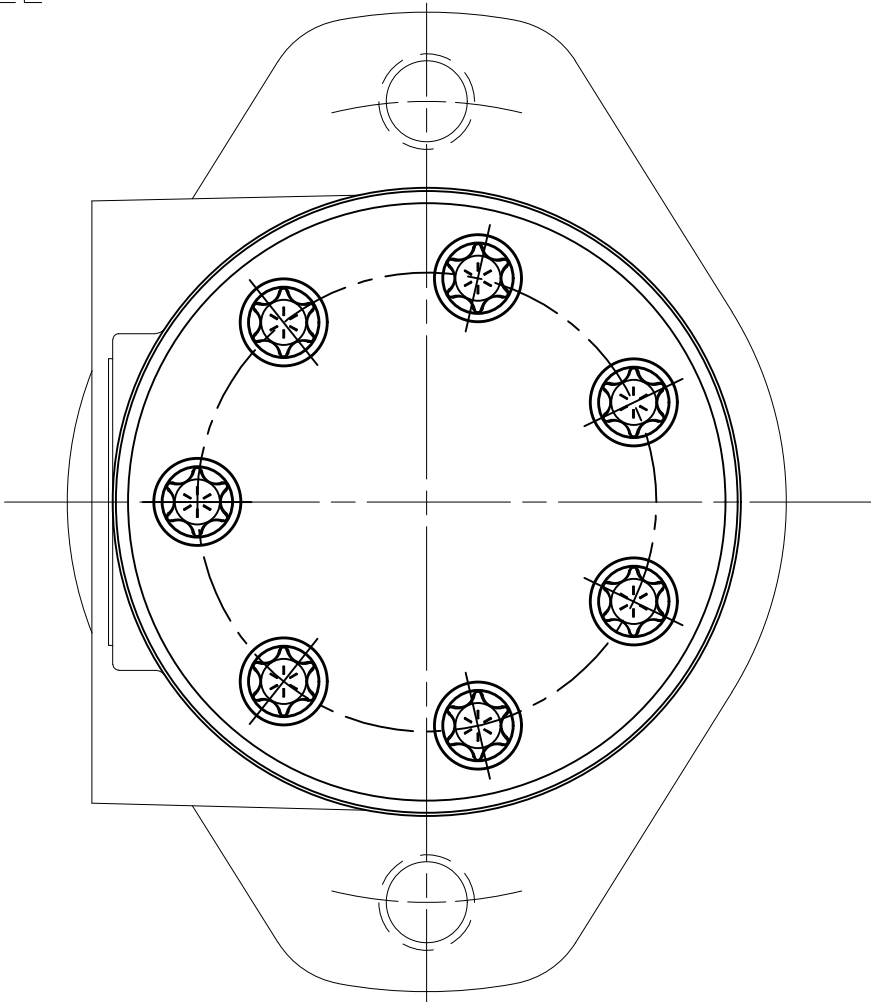
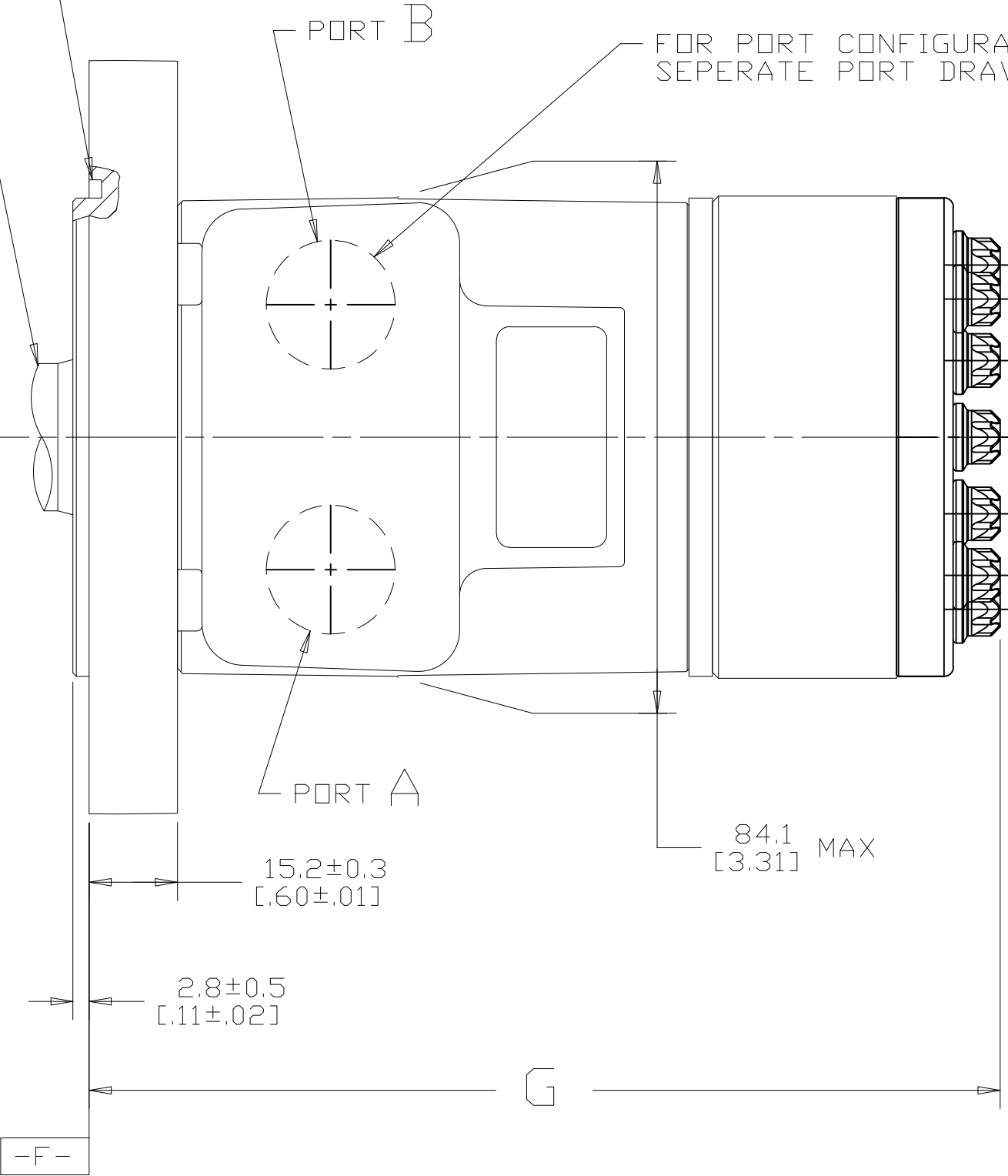
FOR SHAFT CONFIGURATION SEE  
SEPERATE SHAFT DRAWINGS.

GROOVE PROVIDED FOR 82.6 [3.25] I.D. X  
2.62 [.103] CROSS SECTION O-RING  
(DASH NO 152)

FOR PORT CONFIGURATION SEE  
SEPERATE PORT DRAWING



2X 1/2-13 UNC-2B THRU  
⌀ 0.64 [0.025] M F E M



NOTE

- 1 ROTATION  
STANDARD WHEN FACING SHAFT END OF MOTOR SHAFT TO  
ROTATE CLOCKWISE WHEN PORT "A" IS PRESSURIZED  
COUNTERCLOCKWISE WHEN PORT "B" IS PRESSURIZED  
REVERSE WHEN FACING SHAFT END OF MOTOR SHAFT TO  
ROTATE CLOCKWISE WHEN PORT "B" IS PRESSURIZED  
COUNTERCLOCKWISE WHEN PORT "A" IS PRESSURIZED
- 2 MOUNTING FLANGE  
TA = STANDARD, 2 BOLT: ⌀82.50 [3.248] X 3.05 [.120] PILOT  
1/2-13 UNC-2B HOLES ON ⌀106.35 [4.187] BOLT CIRCLE
- 3 CASE DRAIN  
00 = NO CASE DRAIN



REVIEWED FOR CLASSIFICATION PER ESP-042

UNLESS OTHERWISE SPECIFIED ALL DIMENSIONS ARE IN INCHES <input type="checkbox"/> MILLIMETERS (INCHES) <input checked="" type="checkbox"/>	DRAWING BASED ON ANSI Y14.5M-1982	
	THE REPRODUCTION, DISTRIBUTION AND UTILIZATION OF THIS DOCUMENT AS WELL AS THE COMMUNICATION OF ITS CONTENTS TO OTHER WITHOUT EXPLICIT AUTHORIZATION IS PROHIBITED. OFFENDERS WILL BE HELD LIABLE FOR THE PAYMENT OF DAMAGES. ALL RIGHT RESERVED IN THE EVENT OF THE GRANT OF A PATENT, UTILITY MODEL OR DESIGN. (PER ISO 16016)	
TOLERANCES X ± ---- .XX ± ---- .XXX ± ---- ∠ ± ----	DRAWN BY/DATE GCB 10-16-96	MATERIAL/HEAT TREAT
UNSPECIFIED RADII ARE ----	CHECKED BY/DATE SDR 10-17-96	TITLE H MOTOR INSTALLATION
UNSPECIFIED DRAFT ANGLES ARE ----	ENGRG BY/DATE RJE 10-24-96	
UNSPECIFIED DRAFT ANGLES ARE ----	METALLURGY ---- BY/DATE	MICROINCHES MICROMETERS (MICROINCHES) <input type="checkbox"/> ----- ARITHMETICAL AVERAGE <input checked="" type="checkbox"/>
DRAWING FORMAT CADD <input checked="" type="checkbox"/> MANUAL <input type="checkbox"/>	THIRD ANGLE PROJECTION	
DO NOT SCALE		NUMBER A-37-395
		SCALE 1/1 SHEET 1 OF 1